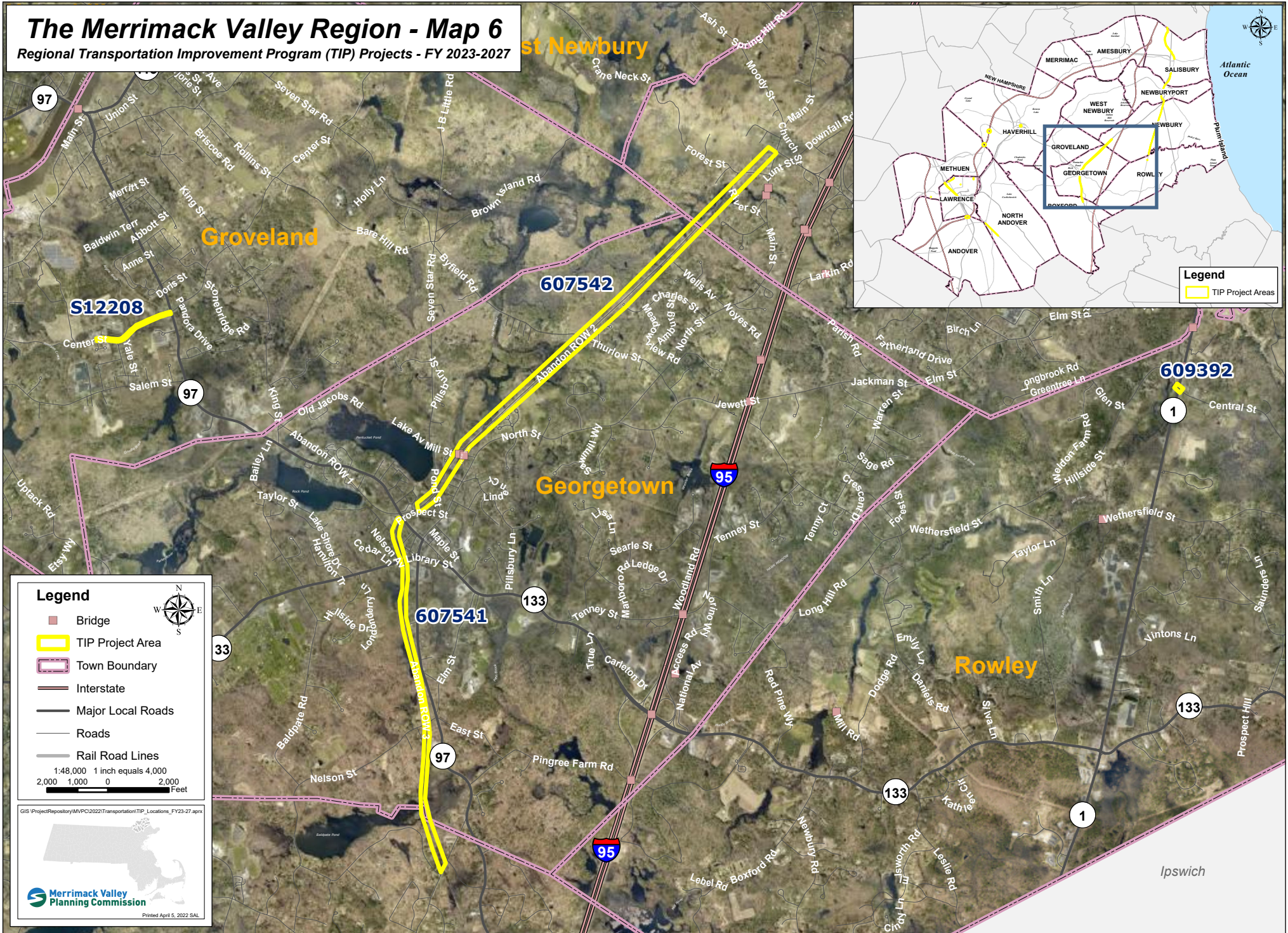


The Merrimack Valley Region - Map 6

Regional Transportation Improvement Program (TIP) Projects - FY 2023-2027



St Newbury

Groveland

Georgetown

Rowley

Ipswich

S12208

607542

607541

609392

Legend

- Bridge
- TIP Project Area
- Town Boundary
- Interstate
- Major Local Roads
- Roads
- Rail Road Lines

1:48,000 1 inch equals 4,000
 2,000 1,000 0 2,000
 Feet

Legend

- TIP Project Areas

GIS \ProjectRepository\MV\PC\2022\Transportation\TIP_Locations_FY23-27.aprx

Merrimack Valley Planning Commission
 Printed April 5, 2022 SAL