

## Item 8 - FFY23-27 Transportation Improvement Program (TIP) Amendment #6 – Highway (Lawrence Rail Crossing)

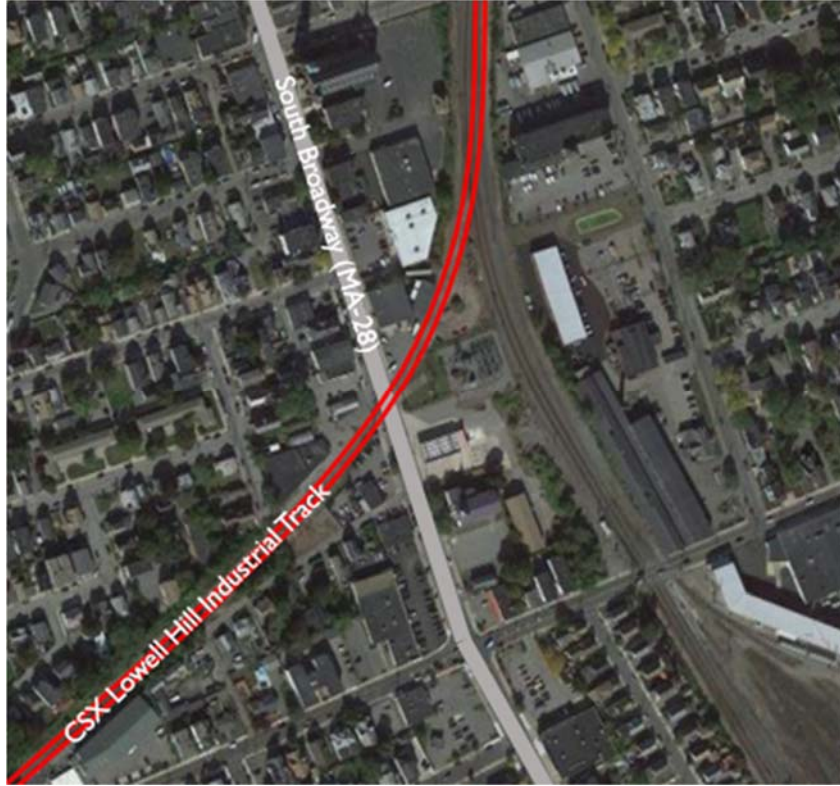
### *Context:*

South Broadway (Route 28) is a two-lane principal arterial in the City of Lawrence with an annual average daily traffic volume of approximately 18,000 vehicles. South Broadway crosses the CSX Lowell Hill Industrial Track which is used several times a week as CSX serves customers along the line. The figure on the following page provides the geographic context of the area.

### *Discussion:*

In the Spring of 2021, the Lawrence Police Department contacted both the railroad and MassDOT about the condition of the roadway crossing surface of the South Broadway grade crossing. The surface, which was originally a full-depth rubber system, was in a condition that required vehicles to swerve out of the travel lanes to avoid potholes and exposed metal bolts within the crossing surface to avoid damage to their vehicles. This was considered a significant roadway hazard and required immediate repair. Pan Am, the railroad owner at the time, worked with the city to repave the crossing thereby eliminating the roadway hazard at the crossing.

Due to conditions of the track and ties below the crossing surface, the repair made in the summer of 2021 failed within two years introducing a hazard at the crossing again. To resolve the on-going safety issues at the crossing MassDOT is advancing a project to fully replace the complete track panel and crossing surface so that the roadway safety issue does not reemerge.



*Action:*

Open the 21-day comment period for the proposed amendment.