

# 2020 Annual Report





## Our Mission Statement

*The Mission of the Merrimack Valley Planning Commission is to foster a cooperative effort among its communities in resolving common, regional problems, to allow its communities to plan jointly, and to promote with the greatest efficiency and economy the coordinated and orderly development of the region and the general welfare of its residents.*

# *A Message from our leadership*



Robert Snow  
Chairman



Theresa Park  
Executive Director

No matter how far back our memories reach, this year has been unlike any other - one marked by challenges, transformation, and resiliency. History is punctuated by great trials that test the human spirit in its ability to respond by contorting and pivoting in every direction possible. This year brought its share of heartaches, economic distress, and general chaos. Yet we are persevering – by finding our inner strengths and moral fortitude which were demonstrated through acts of kindness to neighbors and strangers, creative ways to connect with people safely, and resolute efforts to help local small businesses survive.

While COVID-19 carved a formidable path of destruction, the 15 communities in the region rose to the challenge to not just combat the pandemic, but to support continued economic development and critical private sector investment. Development projects broke ground in our cities and towns, public infrastructure and amenities continue to see improvements, and the environmental quality of our region continues to be protected and enriched. The Merrimack Valley, with its diverse landscape, people, and economic base, is laying the groundwork for a thriving region while still addressing the needs of the time.

No recap of the year would be complete without acknowledging the hard work of the people in the medical, public safety, and service sectors; the frontline staff who go to work every day so we can make sure bodies are healed and calm is restored. And to our municipal leaders, who are also on the frontline protecting our vulnerable populations, tackling the educational needs of our children, and making sure that the day-to-day operations continue to fully meet the needs of their residents.

The people of the Merrimack Valley are our greatest asset, standing ready to do what needs to be done to ensure the region's growth and success. We at MVPC, are proud to stand with them.

A handwritten signature in black ink that reads "Robert Snow". The signature is fluid and cursive.

Robert Snow, Chairman

A handwritten signature in black ink that reads "Theresa Park". The signature is fluid and cursive.

Theresa Park, MVPC Executive Director



*Amesbury, Andover, Boxford, Georgetown, Groveland, Haverhill, Lawrence, Merrimac, Methuen, Newbury, Newburyport, North Andover, Rowley, Salisbury, and West Newbury*

## Our Region

Each of the 15 communities Merrimack Valley Planning Commission serves has its own unique character, challenges, and priorities. However, each also functions as an important piece of a vibrant regional economy, ecology, and transportation network.

What we heard most often from municipal managers, planners, and staff while preparing this report is how important MVPC is to building capacity both in small towns with few or no staffers with professional expertise in engineering and planning and in larger cities that are under-resourced and need extra assistance. Additionally, MVPC provides a conduit through which member communities can communicate and share ideas and resources; forming partnerships that make the entire region stronger and more resilient.

“I’m really grateful to be part of a network where if you have a question you can pick up the phone and someone is there,” said Pedro Soto, Lawrence’s Planning Director, adding that being part of MVPC is like having an advisory board to turn to at any time. “We are in the day-to-day operations of the city all week; MVPC sees things from a higher level and makes connections we may not be aware of in the moment when we need them.”

In a small town like West Newbury, Town Manager Angus Jennings said having MVPC as a regular venue for communication, collaboration, and as a connection to resources has been invaluable.

“MVPC has really been essential to our ability to move forward,” he said.

Particularly in 2020, when the operations of every municipality were turned upside down by the COVID-19 pandemic, officials said virtual meetings facilitated by MVPC were an important lifeline, allowing member communities to share ideas and assist each other with procuring PPE (Personal Protective Equipment), how to conduct business virtually, and other considerations.

In some cases, these meetings led to broader collaborations. Kathleen Colwell, Methuen’s Planning Division Director, said her department is now working with Haverhill on rental housing and with Salisbury on small business assistance programs.

Each of the projects and programs through which MVPC assists individual municipalities is aimed at building and strengthening the entire 15 community region, keeping an eye on a big picture vision for the future, while also focusing on the small details.

The following pages are an overview of some of the regional programs MVPC oversaw in the areas of Community & Economic Development, Environmental, GIS (Geographic Information Systems), and Transportation in 2020.

# Community & Economic Development

MVPC unveiled an easy-to-navigate Data Portal, bursting with data to aid communities with a variety of projects, such as completing grant applications, conducting site selections, and understanding key industry data. Previously, it would have taken hours to gather and sort all of this data for each project, now it is all accessible in one centralized location.

The Comprehensive Economic Development Strategy (CEDS) Committee meets regularly, bringing together public and private sector stakeholders in quarterly meetings to implement an economic development strategic plan to strengthen the regional economy, support private capital investment, and create jobs.

MVPC was awarded \$400,000 in federal CARES Act funds to create a small business technical assistance program, help develop local economic development projects, and produce a Recovery and Resiliency Plan. As Merrimack Valley businesses recover from the COVID-19 pandemic, the organization has served as a

hub for distributing pertinent information to our business community and planning partners regarding local, state, and federal resources related to COVID-19 recovery.



MVPC teamed up with Essex County Community Foundation, Elevated Thoughts, and Creative Community Builders to launch *Merrimack Valley: Place and Meaning 2020*, a cultural planning project. Through this year-long effort, MVPC produced a crowd-sourced cultural asset map and an expression book made up of art submitted by creatives throughout the region. For more information go to: <https://bit.ly/3cWbYb7>

For more information on MVPC Community & Economic Development programs visit: <https://mvpc.org/economic-development-and-planning/>



Lawrence artwork by David Jones

# Environment

MVPC continues to be a resource for towns and communities seeking financial and technical assistance for redevelopment of contaminated properties through MVPC’s EPA Brownfields Assessment funding.



MVPC has aided several communities with the requirements of the EPA Municipal Separate Storm Sewer System (MS4) permit. Work this year included drafting Stormwater Pollution Prevention Plans (SWPPs) and Operation and Maintenance procedures for municipal buildings, parks and open spaces, assisting in providing education and outreach related to stormwater, and conducting collective procurement to assist communities with roadway improvements.



*Sampling beach sand for microplastics*

As a certified Municipal Vulnerability Preparedness (MVP) provider, MVPC assisted the towns of Merrimac, North Andover and Rowley in conducting planning workshops to prioritize hazard mitigation and

resilience strategies. By completing the MVP process, municipalities become eligible for action grants for projects that combat the effects of climate change and promote resilience. All MVPC communities have now completed the MVP planning process.

MVPC assisted several municipalities in either applying to become a Green Community or preparing reports required to remain in the Green Communities Program. This program provides grant funding for energy efficiency projects to communities that pledge to cut municipal energy use by 20 percent over five years and meet other criteria.

The Merrimack River District Commission (MRDC), comprised of municipalities and planning entities along the river in Massachusetts and Southern New Hampshire, was created to establish a consistent, unified framework for decisions and funding priorities for the Merrimack River Basin, and to serve as a first step toward improved coordination of activities and integrated management of the Merrimack River.

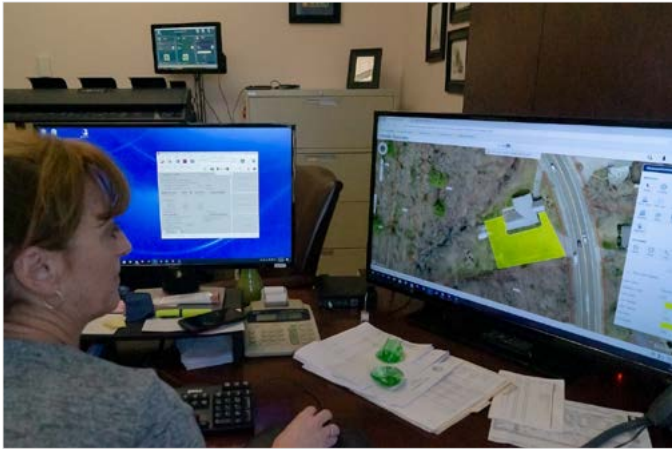


*Coring peat in the Great Marsh to determine health of the benthic community at Phragmites treatment sites*

In our coastal communities, MVPC took on a variety of projects to treat invasive species, map and cleanup microplastic hotspots, and protect and restore the Great Marsh from storm surge and sea level rise.

*For more information on MVPC Environment programs visit:*  
<https://mvpc.org/environment/>

# GIS (Geographic Information Systems)



Salisbury Assessor, Cheryl Gorniewicz measuring footprint areas with Eagleview/Pictometry's ConnectExplorer

In 2020, access to technology and data became more important than ever. MVPC was able to continue providing the same level of service to our member communities thanks to the work of our GIS Program staff, who established virtual meeting platforms, coordinated remote access and increased network capability to accommodate social distancing in the office.

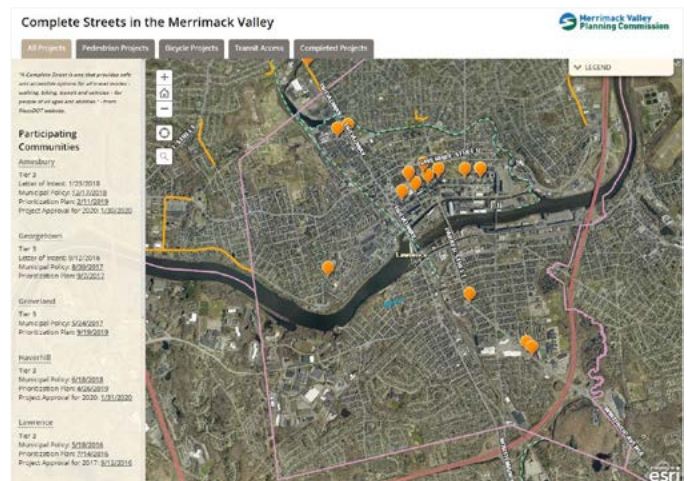
At the same time, the GIS Program expanded its operation by implementing new technologies and projects throughout the region, including the implementation of new public engagement technologies using Esri Story Maps. Story Maps allow for the integration of text, images and multimedia tools into interactive maps, bringing projects and places to life and allowing the public to better understand the planning process.

New data sets, increased functionality, and new print templates were added to MVPC's MIMAP (Municipal Information Mapping Access Program), a web-based GIS viewing application that makes a broad array of GIS data available to municipal managers and staff as well as the public. Layers of information from parcel data to wetlands locations are accessible via MIMAP and can be used for observation and analysis.

MVPC's GIS program focused on creating mobile applications that utilize the latest advancements in technology in 2020, providing field access for a broad

range of information and the ability to add real-time information to GIS databases and applications. Having these abilities at their fingertips allows officials to speed up analysis and decision-making using the latest data. Firefighters, police officers, engineering crews, surveyors, utility workers, soldiers, census workers, field biologists, and others, use mobile GIS to complete tasks such as field mapping, asset inventories, asset maintenance, and inspections. MVPC deployed new mobile systems to manage electric networks and trees, as well as expanded capability of existing applications such as the Stormwater Inspector.

The GIS Program completed acquisition of Eagleview (formerly Pictometry), a high-resolution aerial imagery program, in April 2020. Eagleview imagery provides a unique ability to view any location from four separate directions as well as conduct measurements and analysis using the photos. It can be used to conduct property evaluations and assessments, and is a great tool to assist in emergency response planning. MVPC was the first regional organization nationwide to acquire this program in 2001 and works with communities in the region to secure new imagery every two to three years, building an increasingly invaluable asset for the region.



For more information on MVPC GIS programs visit: <https://mvpc.org/gis-and-information-technology/>

# Transportation



Route 495 bridge replacement, Photo by MassDOT April 2020

As an important data resource for the region, MVPC Transportation staff continued collecting traffic counts with an eye toward COVID-related trends and impacts sidewalk data and turning movements across the region. To further enhance our work to help communities improve management of their infrastructure, we coordinated with the GIS Department to implement the new “Cartegraph OMS” system, a web-based pavement management system that connects to MVPC’s GIS ecosystem, substantially improving staff’s ability to collect and manage road surface condition data, produce maps and other graphics, and perform various roadway surface maintenance budgeting analyses. This technology was then used in the Town of Groveland as MVPC assisted that community in implementing a Pavement Management Program.

MVPC worked with communities and MassDOT to develop the FFY 2021-2025 Transportation Improvement Program (TIP), which includes roadway improvement projects, bridge replacements, and multi-use trail construction across the region, as well as the replacement of nine MVRTA fixed route buses. Additionally, staff initiated several transportation studies and developed the MVMPO’s FY21 Unified Planning Work Program, which will include several traffic studies and safety audits across the region. Staff also developed a list of transportation projects that received federal funding obligations in 2020.

MVPC completed the Coordinated Public Transit Human Services Transportation Plan, which identifies the unmet transportation needs for seniors and individuals with disabilities in the region as well as strategies for addressing them. Staff also worked with the Merrimack Valley Regional Transit Authority on such tasks as finalizing a Bus Route Marker project used to improve its public-facing transit app, developing the Authority’s Regional Transit Plan, updating its fixed route bus maps, completing ADA analyses of the MVRTA’s demand response transit services and reviewing ridership on the Authority’s Boston Commuter Bus service.



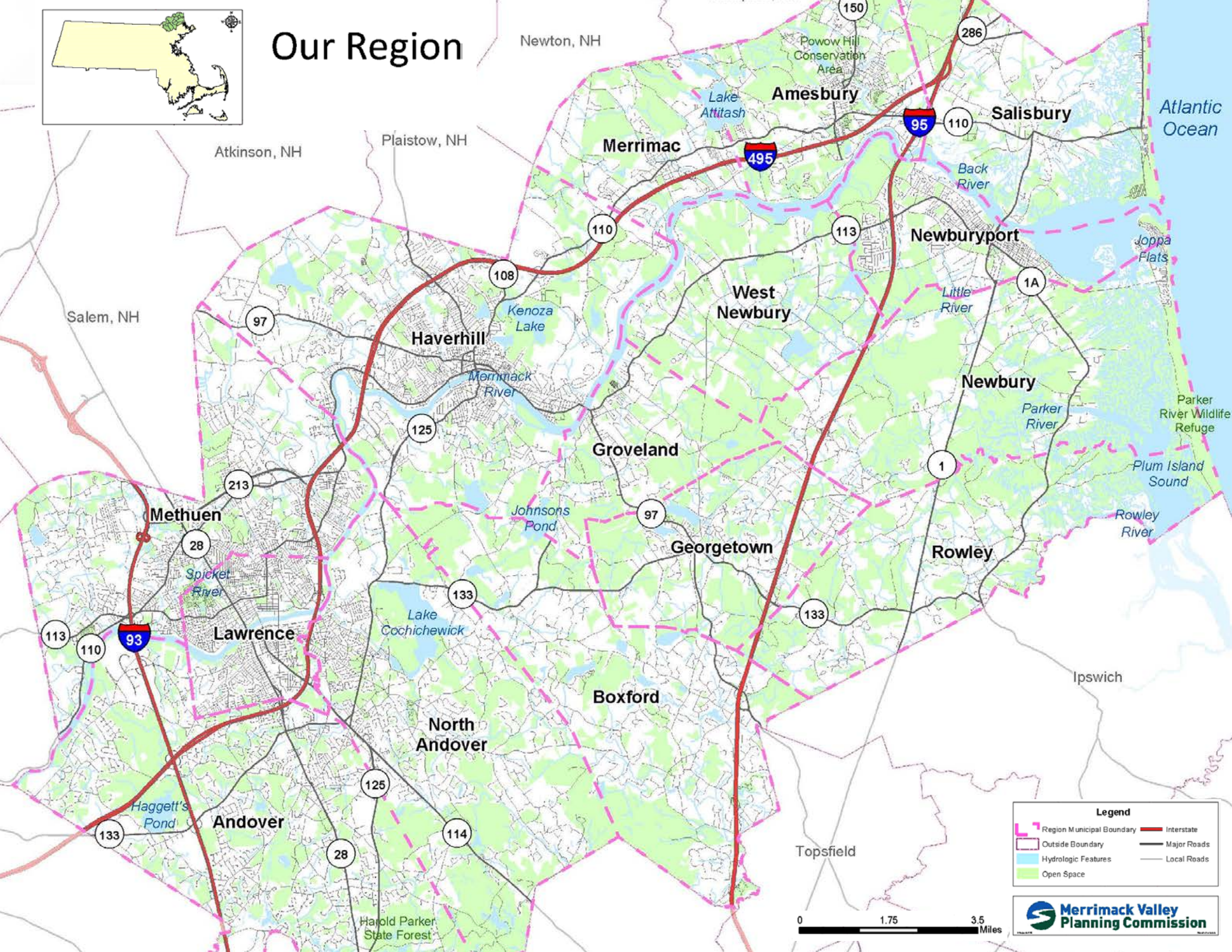
The MVRTA provides services to people of all ages and abilities  
Photo by More Advertising/MVRTA

For more information on MVPC Transportation programs visit:  
<https://mvpc.org/transportation/>





# Our Region



Newton, NH

Powow Hill Conservation Area

Amesbury

286

Salisbury

Atlantic Ocean

Atkinson, NH

Plaistow, NH

Merrimac

95

110

Newburyport

Joppa Flats

Salem, NH

97

Haverhill

108

Kenoza Lake

West Newbury

113

Little River

Newbury

1A

Parker River Wildlife Refuge

Plum Island Sound

Groveland

Parker River

Rowley River

Methuen

213

Johnsons Pond

Georgetown

Rowley

Ipswich

113

110

93

Lawrence

28

Spicket River

133

Lake Cochichewick

133

Boxford

North Andover

125

114

Andover

133

Haggett's Pond

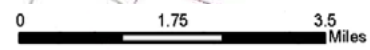
28

Harold Parker State Forest

Topsfield

**Legend**

- Region M Municipal Boundary
- Outside Boundary
- Hydrologic Features
- Open Space
- Interstate
- Major Roads
- Local Roads





## Kassandra Gove, Mayor *Amesbury*



For 40 years, the Trader Alan Truck Stop at the junction of I-495 and Route 150 in Amesbury was a 24-hour full-service truck stop, boasting a service station, travel store, diner, and motel.

Abandoned in the 1990's, the 6.77-acre commercially zoned parcel was taken by the city through tax foreclosure in 2001 and was identified as a contaminated, or Brownfields site.

Redeveloping the site became critical in recent years as the South Hunt Road corridor began attracting development, including the 100-unit Village at Bailey's Pond condominiums and the \$70 million Maples Crossing sports complex.



*Trader Alan's 24-hour full service truck stop*

The city did not have the staffing capacity to get the site ready for redevelopment. Funding from the EPA Brownfields program, administered by MVPC, was instrumental in advancing its site-readiness, determining the level of contamination and outlining the steps to remediate the hazards.

In May, the City Council unanimously voted to declare the parcel surplus and begin the process of selling it to a private entity.

In 2020, the MVPC transportation staff initiated traffic studies at three key intersections with safety concerns: Route 110 at Kimball Road, Main Street at Merrimack Street, and in Market Square. Data collected at these locations will be adjusted to take the reduction in traffic, due to COVID-19, into account.

On the data front, MVPC assisted various city departments in using MIMAP (Municipal Information Mapping Access Program) to add zoning updates to the map, reconcile assessor's data with the map, and add new layers including potential trail linkages mapped by MVPC.

The MVPC teamed up with the Amesbury Chamber of Commerce & Industrial Foundation to present the Merrimack Valley Data Portal to local economic development stakeholders. This tool provides demographic and economic data for municipalities, businesses, non-profits, and the public. The information shapes how public resources are directed and how business decisions are made. Amesbury is currently using the data portal to help locate potential businesses eligible for CARES Act CDBG program relief grants.

In the public safety realm, MVPC created the Tri-Town Hydrant Locator mobile app, a resource that allows fire department staff in Amesbury, Newburyport, and Salisbury to obtain the location and characteristics of every hydrant in the three communities, providing an additional level of efficiency to their mutual aid agreements.



## Andrew P. Flanagan, Town Manager

# Andover

Prior to 2020, the MVPC assisted the town of Andover in developing their MVP (Municipal Vulnerability Preparedness) Plan, which qualifies the town to apply for MVP action grants from the state. The process also helped to identify projects where green practices and infrastructure could be incorporated to create a more resilient Andover, both environmentally and economically.

One of those projects, which will go out to bid for construction in 2021, is the reimagining of the parking lots behind Old Town Hall. The area will be reconfigured to better accommodate vehicles, pedestrians, and all circulation downtown. Wider sidewalks will provide safety for pedestrians, as well as expand opportunities for outside dining. There will also be some open gathering places that can be programmed for outdoor entertainment. The project will incorporate many green infrastructure and environmentally sustainable elements such as rain gardens to provide better control and filtering of stormwater, and electric vehicle charging stations.



*MVP listening session, Andover*

“It doesn’t sound sexy, but it will help us reimagine the downtown in a way the community has been waiting for,” said Andover Director of Planning Paul Materazzo.

The town is also entering into the design process for improvements to the Route 133 corridor from Shawsheen Street to Beacon Street that include drainage upgrades, a shared path to encourage cycling, and sidewalk improvements.

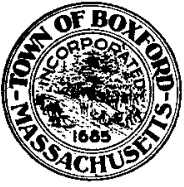


*Route 133 corridor, Shawsheen and Beacon Streets*

“It is a tremendous enhancement that will bring back the vitality of the historic village of Shawsheen Square,” said Materazzo, adding “the town is relying on having the project listed on the 2022-2026 Transportation Improvement Program (TIP), a document developed by the MVPC, to receive federal construction funding.”

On the economic development front, MVPC produced a targeted lead sheet for businesses in the personal care and restaurant industries in Andover as part of an outreach effort led by the Small Business Coalition to pair businesses up with technical assistance resources to help them recover from COVID-19.

The MVPC has continued to provide technical support to the town to automate GIS data synchronization with MIMAP (Municipal Information Mapping Access Program); as well as assist in the implementation of CMMS (Computerized Maintenance Management System) software.



## Alan Benson, Town Administrator

# Boxford

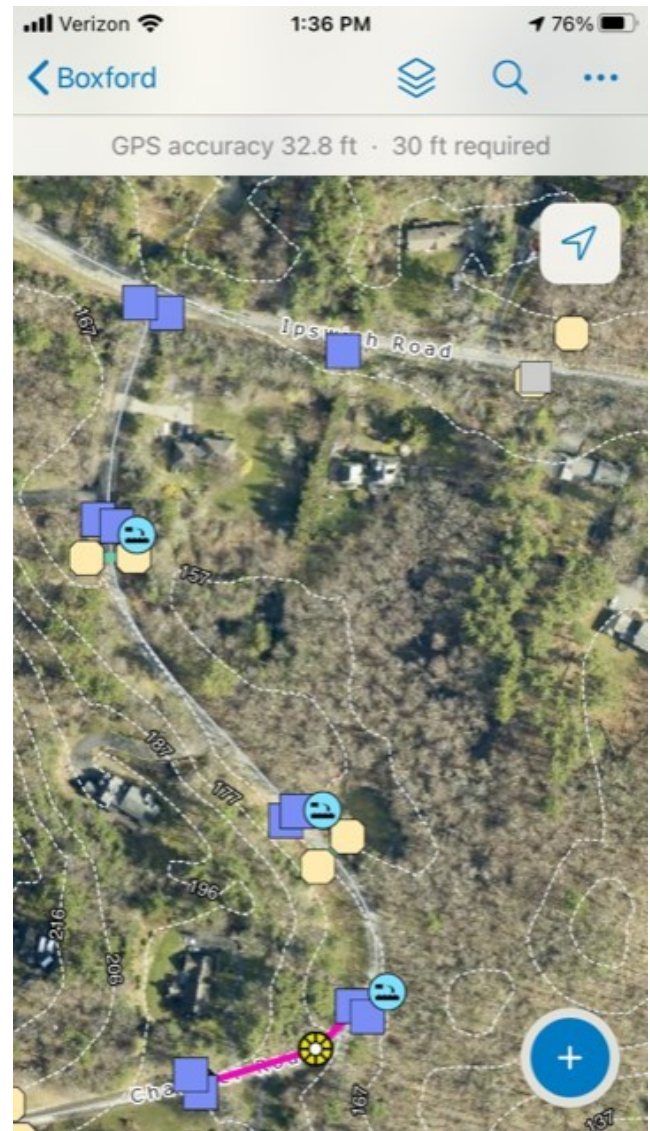


Stormwater management was a priority for all communities in the Merrimack Valley in 2020 as they continued to work toward meeting tightened federal stormwater regulations in an effort to reduce water pollution.

Contaminants like fertilizers, grease, oil, and pet waste are swept up in runoff, gliding over non-permeable surfaces like roadways, driveways and parking lots and into storm drains and other structures that lead to lakes, rivers and the ocean. Contaminated stormwater, which unlike wastewater, which does not get the same level of treatment before heading into open water, is now the top culprit responsible for water pollution in Massachusetts.

In Boxford, MVPC revised and streamlined the Stormwater Inspector mobile application for the town. The Stormwater Inspector provides a mobile-accessible and desktop application to inventory and manage the stormwater (drainage) infrastructure. The locations of features associated with the system along with field observations and sampling results are all stored in the application.

Additionally, MVPC was able in 2020 to continue providing support for the town's GIS (Geographic Information System) by coordinating data integration with outside consultants and updating all parcel data for FY21.



*Stormwater Mobile Application*



# Michael Farrell, Town Administrator

## Georgetown

Georgetown was approved by the Commonwealth as a Green Community in 2020, a designation achieved with assistance from MVPC.

Once designated, Green Communities are eligible for grants to implement energy conservation measures that help them not only reduce energy use, but also cost to the town.



Georgetown was awarded an initial grant of \$140,270 by the state’s Green Communities program to upgrade lighting, insulation and weatherization, at both Georgetown Town Hall and the

Public Safety Building. The project is expected reduce the town’s heating and cooling expenses by 20 percent.

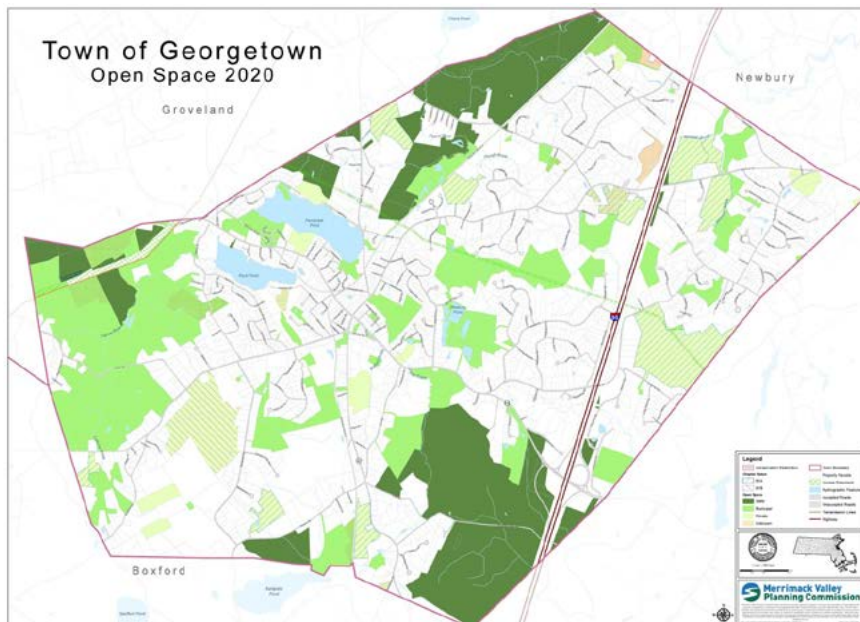
The town was also successful in its bid for a \$47,000 grant for a wetlands/stormwater study as part of an effort to overhaul their municipal parking facility. This grant came from the Commonwealth’s Municipal Vulnerability Preparedness (MVP) Program.

The town was eligible for this grant program, aimed at helping communities combat the effects of and build resilience to climate change, because it previously went through the planning process of becoming a MVP certified community. MVPC was able, in 2020, to revise and update Georgetown’s Open Space map, as well as update all parcel data for FY21.

MVPC transportation staff provided technical assistance to the town regarding the implementation of 20 MPH speed zones.

Moving forward, MVPC will be adding overlays in MIMAP (Municipal Information Mapping Access Program) for marijuana use and water resource districts.

And the town will be scheduling a design public hearing on the development of their section of the 28-mile Border to Boston Trail. The multi-use rail trail, which was placed on the TIP (Transportation Improvement Program) making it eligible for federal transportation funding with assistance from MVPC, will traverse from Salisbury to Peabody, providing alternative transportation links to town centers, schools, businesses, and public parklands in nine communities.

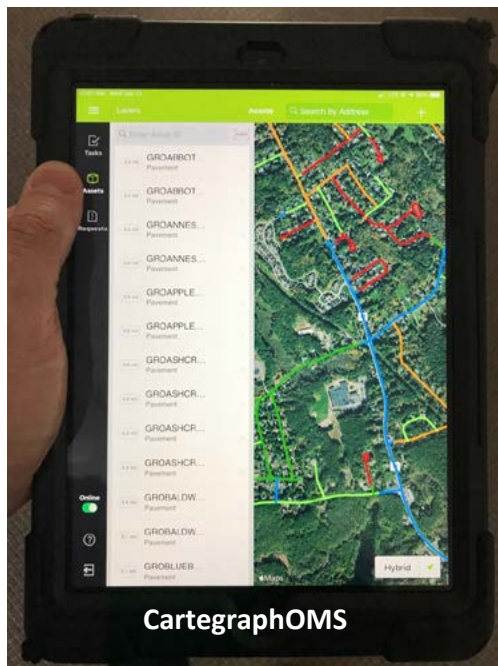




## Kevin Paicos, Finance Director *Groveland*

In 2020, Groveland focused on modernizing operations, making them more efficient, transparent, and data driven.

As a small town constrained by limited resources, Town Planner Rebecca Oldham said they rely on Merrimack Valley Planning Commission staff to fill in the gaps.

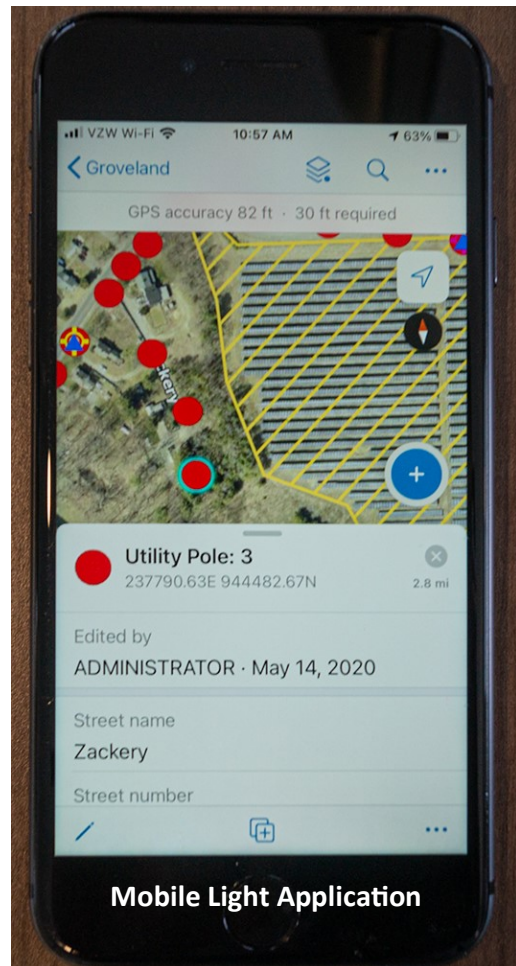


*Groveland's Pavement Management System*

The town recently replaced the elected Road Commissioner position with an appointed Highway Supervisor and is working with MVPC's transportation staff to better integrate traffic management and set up systems for future planning. The new "CartegraphOMS" system, a web-based pavement management system that connects to MVPC's GIS ecosystem, allowed staff to collect the road surface condition data that will be used in developing Groveland's new pavement management program. The program will comprehensively examine road surface condition data for over 45 miles

of roadways and generate a proposed schedule of specific roadway improvements that will optimize roadway maintenance spending.

Oldham said "Groveland, like many communities under the MVPC umbrella, heavily uses the MIMAP (Municipal Information Mapping Access Program) tool to prioritize projects and pull data for grant applications. Having the data at our fingertips that can be used to create interactive Story Maps to better communicate priorities and projects to the public, has been a game changer."



*Groveland's Light Department Application*



James J. Fiorentini, Mayor  
*Haverhill*



*Haverhill Downtown artwork by Ana Smyth*

Progress continued marching forward in Haverhill in 2020, with the city being awarded a \$1.95 million MassWorks grant to fund traffic improvements and infrastructure upgrades as part of the long-awaited redevelopment of the former Ornstein Heel factory, a previous Brownfields site.

The MVPC plays an important role in reviewing and grading MassWorks applications originating in our region, analyzing how well the applications align with priorities identified in various strategic development, housing, and transportation plans.

City officials used data from the MVPC-created Merrimack Valley Data Portal in the grant proposal. Funding will be used to support a transformative transit oriented mixed-use development adjacent to the Bradford Commuter Rail Station providing 290 market-rate housing units, 10,000 square feet of retail space, and 33,000 square feet for new public amenities — including parks, a playground, an amphitheater, a kayak launch, and improved connections to the Bradford Rail Trail.

MassWorks funding will be used to reconfigure the intersection of Main Street and Marsh Avenue to slow speeds and reduce the crossing width, as well as to improve a 500-foot-stretch of Main Street from Sagamore Street to Marsh Avenue. Improvements include building sidewalks, bicycle lanes, roadway shoulders, planting strips and traffic islands. The project also includes installing crosswalks with pedestrian islands and the planting of dozens on street trees.

MVPC was also able to connect Haverhill with the Commonwealth Places Grant Program run by MassDevelopment. The Greater Haverhill Chamber of Commerce was awarded a \$10,000 Commonwealth Places COVID-19 Response Round: Resurgent Places grant for its Riverfront Boardwalk “Booth’let,” a new parklet to be set up on Merrimack Street featuring outdoor dining space and booths where local retailers can sell products.



*Haverhill Booth'let rendering by Fishbrooke Design Studios, Haverhill*



## Daniel Rivera, Mayor *Lawrence*



*Lawrence Partnership Revolving Test Kitchen*

Despite the pandemic, the push continued to support local businesses, housing, and infrastructure improvements in Lawrence in 2020. MVPC was able to secure a \$600,000 Economic Development Administration investment to support Lawrence Partnership's Revolving Test Kitchen. This program provides local food-based businesses with the space and business training programs they need to succeed. The expanded facility will serve a broad range of food-based businesses and entrepreneurs throughout the region, and the project's location in an Opportunity Zone will attract additional, diverse investment to the Merrimack Valley region.

Lawrence was also awarded \$1.3 million to support Island Parkside public infrastructure improvements, connecting Lawrence Community Works' new \$27 million, 80-unit affordable Parkside Housing Development with Ferrous Park, an open space recreation area. The project and development will replace a former industrial area with affordable housing, community access to green space, create 78 new jobs, and replace outdated stormwater infrastructure.

The MVPC plays an important role in reviewing and grading MassWorks applications originating in our region, analyzing how well the applications align with priorities identified in various strategic plans.

MVPC produced a targeted lead sheet for businesses in the personal care and restaurant industries in Lawrence as part of an outreach effort led by the Small Business Coalition to pair businesses up with technical assistance resources to help recover from COVID-19.

Senior Transportation Planner Betsy Goodrich served as a co-chair of the Mayor's Health Task Force's Healthy Active Living Working Group, which is working on a citywide Food Assessment and improving access to city schools and parks.

Lawrence Planning Director Pedro Soto said the city continues to rely on MVPC for data when writing grant applications, as well as GIS technical assistance to update zoning and zoning overlay maps, update parcel data, and provide support for Department of Revenue data submittals.



*Affordable Parkside Housing Development (Ferrous Park)  
Photo by Lawrence Community Works*

"A day doesn't go by that we don't hop on MIMAP (Municipal Information Mapping Access Program) and rely on the data," said Soto, adding that all he has to do is explain a project to MVPC GIS and IT Manager Jerrard Whitten and he turns it around.

"He lets you go on and explain a situation and walks you through the options," Soto said. "You walk away feeling really heard and understood."





Carol McLeod, Finance Administrator  
*Merrimac*



*Coastal Metals, Inc. Brownfields Site, Merrimac*

Merrimac was a center for carriage manufacturing in the 1800's. At that time, the 1.3-acre site at 2 Littles Court was the home of a carriage manufacturing factory. It was later utilized as a brass foundry and most recently as the location of Coastal Metals, a metal plating facility.

In 2002, Coastal Metals went out of business, leaving behind a site significantly contaminated by hazardous materials including chlorinated solvents, heavy metals, and cyanide in the soil and groundwater.

Located off of busy Route 110 and close to Route 495, the site has been a priority of the town for clean-up and redevelopment.

The Merrimack Valley Planning Commission continues to be a resource for towns and communities seeking financial and technical assistance for redevelopment of properties with known or suspected sources of environmental contamination. In 2020, MVPC executed a \$225,000 subgrant and loan of EPA Revolving Loan funds to the Coastal Metals site. Once cleanup is complete, North Shore Community Development Coalition plans to build 28 units of much-needed affordable rental housing at the location.

Also in 2020, MVPC assisted the town of Merrimac in continuing to modernize its operations by developing a prototype electronic document management system for town departments, updating parcel data in the GIS system for FY21, and integrating the MVPC GIS ecosystem with the town's building permit application.

One of the most exciting developments of 2020 was the creation and launch of the Merrimac Story Map, a tool used in the planning process for the Municipal Vulnerability Program. The MVP program allows cities and towns to access grant funding for projects that help build reliance to climate change.

The Story Map allows the town to compile a variety of data, maps, graphics, and charts in one easy-to-navigate resource.

MVPC transportation staff provided technical assistance to the town to update their ADA Transition Plan and participated in a meeting with MassDOT officials to discuss what actions are being considered to improve pedestrian access along state-maintained roadways.

Transportation staff also prepared and submitted the Town's grant application for a van for the Senior Center.



# Neil Perry, Mayor Methuen

Methuen continued with plans to redevelop and improve its downtown in 2020, being awarded a \$990,000 MassWorks grant to support the rebuilding of the crumbling Charles Street retaining wall and replacement of adjacent sidewalks.



The project is necessary to save and expand a 54-space city-owned parking lot, as well as protect water and sewer lines beneath Charles Street and improve pedestrian safety and accessibility. Once completed, this infrastructure improvement will unlock the development of two key sites nearby. The historic building at 2 Charles Street (built in 1886) is slated to be converted into a mixed-use development including four residential units and 2,971 sq. feet of commercial space. Another location, nearby on Broadway Street is being developed into 3,000 sq. feet of restaurant space and four residential units.

The Merrimack Valley Planning Commission plays an important role in reviewing and grading MassWorks applications originating in our region, analyzing how well the applications align with priorities identified in various strategic plans.

Kathleen Colwell, Methuen’s Planning Division Director, said “the MVPC is vital to the operation of the city, providing additional capacity and specialized staffing in areas where we have lean staffing such as transportation, GIS, hazard mitigation planning, and housing production planning.”

The city also relies on MVPC for technical assistance for small businesses and downtown improvements.

For instance, MVPC produced an inventory of the small businesses located in Methuen, providing the data required to disburse federal Community Development Block Grant funding quickly and efficiently to

assist small businesses in the wake of the COVID-19 pandemic.

MVPC staff also assisted in the development of a Municipal Separate Storm Sewer System (MS4) project and continued providing support for the city’s MIMAP (Municipal Information Mapping Access Program), a data program Colwell said she “could not function” without.



In the transportation realm, MVPC worked with the city on a plan to improve safety at the intersection of Burnham Road and Riverside Drive, as well as improve access to the Merrimack River at that location. The city was awarded a \$178,858 grant from the Commonwealth’s Shared Streets program to install bicycle lanes, pedestrian yield and warning signs, crosswalks, flashing safety beacons, and a narrowed traffic lane on Riverside Drive.



Burnham Road and Riverside Drive



Tracy Blais, Town Administrator  
*Newbury*



*Plum Island Sound*

In 2020, officials in Newbury looked to MVPC to assist with a number of projects they did not have the capacity or expertise to handle in-house, particularly in the areas of transportation/traffic management, long-range planning, and GIS/data development and management.

The new Newbury Golf Center & Ice Cream Stand on Scotland Road has been very successful, but it is located on a high-speed street and the driveway empties onto a tricky bend in the road. The MVPC conducted a traffic analysis, looking into measures to increase public safety such as speed reduction measures and increased signage.

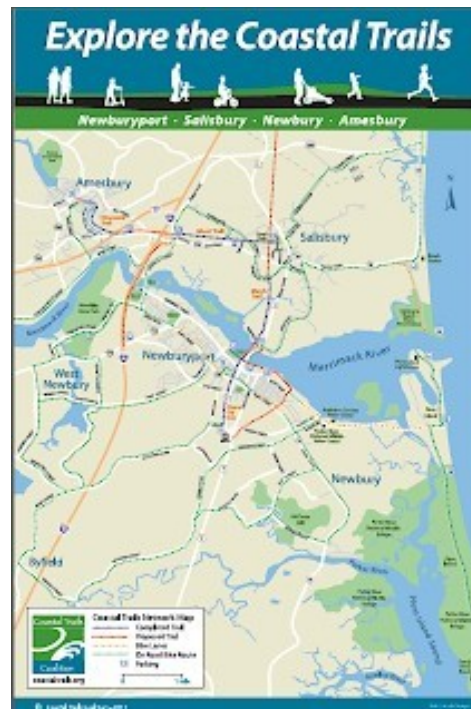
In the area of alternative transportation, MVPC continued to assist the town work on the development of its section of the 28-mile Border to Boston Trail, a non-motorized, multi-use rail trail providing alternative transportation links to town centers, schools, businesses, and public park-lands in nine communities from Salisbury to Peabody.

As the town worked to update its Master Plan, MVPC staff were called upon to provide assistance in several areas, as well as work with town officials to find ways

to boost the town's affordable housing stock. The Housing Production Plan, previously created by MVPC, is being utilized to direct affordable housing developers to sites identified in the report.

Town Planner Martha Taylor said "MIMAP (Municipal Information Mapping Access Program), a tool brought to the town by MVPC, has been invaluable and is used every day."

It allows staff to quickly access all of the information attached to parcels when a resident calls with a question. It also gave officials an efficient and simple way to investigate the impact of possibly changing their required septic setback from 300 feet to 200 or 250 feet; and the opportunity to create a historic resources map.



Additionally, the GIS department at MVPC continued to provide assistance to the town with parcel data management and updates and integrated the MVPC GIS ecosystem with the town's building permit application.



Donna Holaday, Mayor  
*Newburyport*

Newburyport was awarded a \$1 million grant in 2020 from the Commonwealth's Municipal Vulnerability Preparedness Program for a project that will protect its wastewater treatment plant from storm surge and rising sea level.

The City was eligible for this grant program, aimed at helping communities combat the effects of and build resilience to climate change, by becoming a MVP certified community.



*Wastewater Treatment Plant, Newburyport*

Newburyport's waste water treatment plant project includes constructing a sloped stone retaining wall to stabilize 900 feet of the bank along the Merrimack River. Additionally, an elevated berm will also be constructed behind the wall, completing the missing riverfront segment of the Clipper City Rail Trail. MVPC assisted with funding for the cleanup of the Rail Trail and contributed another \$56,000 from its EPA Brownfields Revolving Loan Fund to assist with additional cleanup required on the Wastewater Treatment Plant parcel. Once this project is completed, the plant, which currently sits two to three feet below FEMA's base flood elevation, will be protected by the newly constructed berm and reinforced river bank.

The city was able to utilize MVPC's GIS services to make their data collection and management tools more robust in 2020. MVPC was able to develop and update mobile applications for the city's Department of Public Services infrastructure management, integrate the MVPC GIS ecosystem with the city's building permit application, and update all parcel data for FY21.

Additionally, MVPC created the Tri-Town Hydrant Locator mobile app, a resource that allows fire department staff in Amesbury, Newburyport, and Salisbury to obtain the location and characteristics of each hydrant in each of the three communities, providing an additional level of efficiency to their mutual aid agreements.

On the transportation front, MVPC Transportation Program Manager Tony Komornick said one of the biggest complaints from residents of Newburyport is speeding and how to better mitigate traffic conditions to make the roadways safer for drivers, cyclists and pedestrians.

Komornick said "the good news in 2020 is that the Massachusetts Department of Transportation is beginning to rethink the way it has been determining speed limits, which could have significant repercussions statewide. Currently speed limits are based on the "85<sup>th</sup> percentile rule," wherein if traffic engineers clock the speed of 100 drivers, the speed of the 15<sup>th</sup> fastest driver determines the speed limit. It is a standard that many have argued has led to, faster, and more dangerous roadways.





## Melissa Murphy-Rodrigues, Town Manager

# North Andover



*Route 114 Corridor, North Andover*

There are big plans in development along North Andover's Route 114 corridor including the expansion of Merrimack College, an ambitious mixed-use reimagining of the 76-acre Royal Crest apartment site, and the redevelopment of the former Ethan Allen retail site.

With the assistance of MVPC, the town was able to place a project to upgrade and make improvements to Route 114 on the FY 2021-2025 TIP (Transportation Improvement Program), making it eligible for federal funding.



*MVP workshop, North Andover*

In the economic development arena, MVPC produced a targeted lead sheet for businesses in the personal care and restaurant industries in North Andover as part of an outreach effort led by the Small Business Coalition to pair businesses up with technical assistance resources to help recover from COVID-19.

Additionally, MVPC created the data portal the town has used to craft its economic development strategy, parcel data for which has been updated for FY21 and has been an active participant in Comprehensive Economic Development Strategy (CEDS) meetings as well

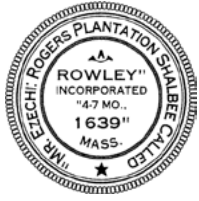
as Targeted Economic Development Strategy (TEDS) efforts, aimed at providing assistance to businesses effected by the Columbia Gas explosions as well as ongoing economic development efforts.

As the communities of the Merrimack Valley experienced the effects of a changing climate, MVPC made it a priority to assist its 15 member communities into the Municipal Vulnerability Preparedness (MVP) Program.

Inclusion in the program makes communities eligible for grant funding for projects that combat the effects of climate change and boost a town's resilience.

As a certified Municipal Vulnerability Preparedness (MVP) provider, MVPC assisted North Andover in conducting planning workshops to prioritize hazard mitigation and resilience strategies. Before the COVID-19 pandemic, this planning process was held in a two-day in-person workshop. With the onset of stay-at-home orders, the program was quickly pivoted to an online presentation by the MVPC team. Utilizing an ArcGIS Story Map format, workshop attendees were able to identify community vulnerabilities to natural hazards made worse by climate change and prioritize actions to make the community more resilient.

North Andover is utilizing the MVP process to update its Multi-Hazard Mitigation Plan and is prioritizing projects for future grant applications.



Deborah Eagan, Town Administrator

# Rowley

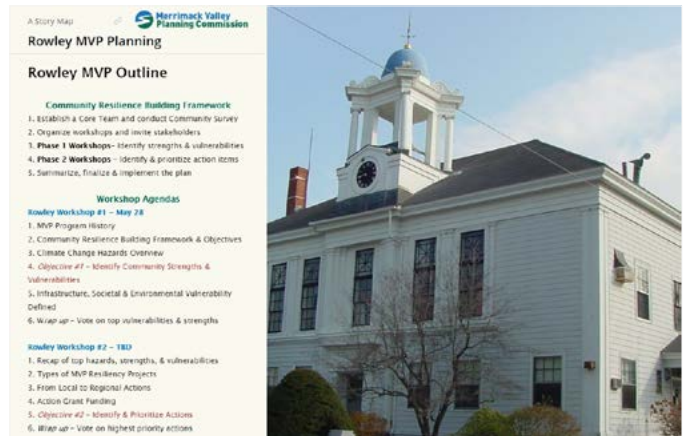
The COVID-19 pandemic changed the way everyone conducted business in 2020, but planning goals and priorities had to move forward in towns across the Merrimack Valley, despite the disruption.

In Rowley, that meant combating the short and long-term effects of a changing climate by completing the Municipal Vulnerability Preparedness (MVP) planning process.

As a certified MVP provider, Merrimack Valley Planning Commission assisted Rowley in conducting planning workshops to prioritize hazard mitigation and resilience strategies. Before the COVID-19 pandemic, this planning process was held in a two-day in-person workshop. With the onset of stay-at-home orders, the program quickly pivoted to an online presentation with outstanding work by the MVPC team. Utilizing an ArcGIS Story map format, workshop attendees were able to identify community vulnerabilities to natural hazards made worse by climate change and prioritize actions to make the community more resilient. MVPC’s Rowley MVP Story Map was featured as a model best practice in the Massachusetts Resilience Works October Newsletter.

Also in 2020, the MVPC’s GIS team updated Rowley’s electrical system maps using mobile application data, worked with outside consultants to facilitate data integration with the town’s GIS ecosystem, and updated parcel data for FY21.

Additionally, MVPC Transportation Program Manager Tony Komornick is assisting the town in trying to get transit services in place, especially for the disabled community.



MVP Story Map, Rowley

### MVP Rowley Word Cloud - ENV



Completing the MVP planning process makes the town eligible for action grants used for projects that boost resilience to climate change.

Town Administrator Deborah Eagan said “because Rowley is a small town with no Department of Public Works and a Planning Department that consists of one full-time planner and a part-time clerk, with no in-house engineer, we rely heavily on MVPC’s services to handle issues like the MVP plan, stormwater compliance, flyovers for maps, traffic counts, and traffic data for the MBTA commuter rail crossing.”

“We would be lost without MVPC,” said Eagan. “Even as a small town we receive a lot of attention and everyone is very professional. It is incredible to be able to access that high level of expertise in so many areas.”



## Neil Harrington, Town Manager

# Salisbury

Being an oceanfront community has many advantages, but also comes with an increased risk of serious, destructive, and expensive flooding. Forty-three percent of the town of Salisbury sits within the 100-year flood plain, faced with threats from the Atlantic Ocean, Merrimack River, Blackwater River, and marshes, as well as other smaller brooks and streams.

Salisbury has engaged in substantial planning efforts and taken several proactive steps to adapt to climate change and mitigate flooding over the past decade. These efforts include joining the National Flood Insurance Program's Community Rating System (CRS). The MVPC assisted the town in 2020 to update the CRS maps and data for their latest application. Communities participating in the CRS can earn community-wide discounts on flood insurance in exchange for floodplain management exceeding FEMA's minimum requirements. Water and how to manage it was a big topic in Salisbury in 2020.

In addition to helping with the CRS application, the MVPC's GIS (Geographic Information Systems) team performed a comprehensive water system data update for the town and developed a data integration strategy for the Pennichuck Water company.



*MVP workshop, Salisbury*

In the public safety realm, MVPC worked with Fire Chief Scott Carrigan to create the Tri-Town Hydrant Locator mobile app, a resource that allows fire department staff in Amesbury, Newburyport, and Salisbury to obtain the location and characteristics of each hydrant in each of the three communities, providing an additional level of efficiency to the mutual aid agreements between the three departments.



**Before:** Salisbury Storm—January 2016



**After:** Sand replenished—February 2018



Angus Jennings. Town Manager

## West Newbury



*West Newbury Boardwalk*

In West Newbury, town officials and members of the River Access Committee have long been working on ways for the public to access the Merrimack River.

MVPC was able to assist in determining proper boundary lines for what was once thought to be one, but was actually three parcels along River Road, leading to these parcels being properly put onto tax maps.

There is also a plan for Essex County Greenbelt to purchase the 31 acres with the assistance of Community Preservation Act funds. The final project will not only provide recreational opportunities for the public, but

also protect the forest and wetlands on the property, preserving an ecosystem critical for resilience to the adverse impacts of climate change. As part of MVPC's commitment to conservation and resilience, they also worked with West Newbury to conduct monitoring on all town held conservation restrictions. The town will hold a conservation restriction on the River Road land and Greenbelt will manage it and create walking trails, as well as a small parking lot allowing for access both to the trails and to the river.

MVPC also assisted West Newbury in preserving its character and heritage by helping the Historical Commission create a historical properties survey with interactive maps that include historic districts, landmarks, and cemeteries, making researching these properties more accessible to the public.

Utilizing data and mapping to increase efficiency and transparency is key to MVPC's mission, as was seen in 2020 with the mapping of West Newbury's Capital Improvement Projects (CIP) on the town website.

"It has helped us make incredible strides with our capital planning," said Town Manager Angus Jennings. "It is transparent and complete, including our full universe of known and potential capital projects."

MVPC staff also created a user-friendly color-coded map for the town's water main replacement program that allows residents to understand when pipes in their neighborhood will be replaced, as well as for the town to align the paving schedule with the water main project, modernizing communication and preventing costly oversights.

MVPC transportation staff also collected data on the location and condition of sidewalks in the community.



# Project List

2020 MVPC ACTIVITIES						
	Community	Transportation	Environment	GIS	Comm & Econ Dev	Projects
Amesbury			•			Create tri-town (Amesbury/Newburyport/Salisbury) hydrant access mobile application
			•			FY 2021 parcel update
			•			Updated municipal zoning and zoning overlay data
		•				Brownfields assessment assistance for Trader Alan Truck Stop
		•				Brownfields assessment assistance for removal of oil tanks from the Visitor Center site
	•					TIP - Elm Street reconstruction
	•					TIP - Stairway connection from Horace Greely Trail to Main St
	•					TIP - Ghost Trail to Elm St. connector
	•					Amesbury Square traffic study
	•					Main St./Merrimack St. intersection study
				•	Route 110/Kimball Rd. intersection study	
				•	EDA - Resiliency Plan application	
Andover			•			Assistance with exploration of GPS vehicle tracking systems
			•			Coordinating update of CMMS (computerized maintenance management system) software, Maintstar
			•			Working to develop automated MIMAP update
	•					TIP - Route 133 corridor reconstruction (candidate project)
				•	Targeted business outreach support	
Boxford			•			Working with DPW to enhance Stormwater Inspector mobile app
			•			Completed FY2021 parcel update
			•			Assisting with implementation of Pictometry Change Finder service
		•				MS4 support - bylaw & regulation update, O&M requirements for Facilities and Open Space
	•					TIP - Route 133 corridor reconstruction (candidate project)
				•	TIP - Georgetown South/Boxford section of Border to Boston (B2B) Rail Tail	
Georgetown			•			Updated open space layer
			•			FY 2021 parcel update
			•			Developing revised zoning and zoning overlays map
			•			Collaborating with ECGA to publish parcel prioritization data via MIMAP
		•				Designation assistance w/ REPA grant
	•					TIP - Route 97 Reconstruction from Moulton St. to Groveland line (candidate project)
	•					TIP - Georgetown South/Boxford section of B2B
•					TIP - Georgetown North/Newbury section of B2B	
Groveland			•			Completed FY2021 parcel update
			•			Created mobile open space and trail mapping application
			•			Developed mobile application for electrical system management (GMLD)
			•			Assisted Fire Department with access to GIS-based hydrant data
	•					TIP - Groveland community trail
	•					Groveland pavement management program
	•					Collected sidewalk location and condition data
	•				Open Space plan updated in 2019 with MVPC assistance; approved by DCR in February of 2020	
Haverhill			•			Provided synopsis of publicly accessible GIS data for MVPC MIMAP
			•			Assembled information regarding Maintstar CMMS update
		•				Brownfields assessment underway at the Housing Support site (and down-gradient) on South Main Street
	•					TIP - Route 110/Route 108 Intersection Project
	•					TIP - Bradford Rail Trail – Phase II
	•					TIP - North Avenue reconstruction
	•					Lowell Street traffic study
	•					TIP - Replacement of Basiliere Bridge
	•			•		MassDevelopment Commonwealth Places application
				•		EDA application - EforAll expansion
		•			Completed Green Communities annual reporting for 2020 with REPA Grant funding	

# Project List

2020 MVPC ACTIVITIES						
	Community	Transportation	Environment	GIS	Comm & Econ Dev	Projects
Lawrence			•			Completed FY2021 parcel update
			•			Updated zoning data and produced zoning and zoning overlays map
			•			Conducted MIMAP training
			•			Created interactive food establishment mapping application
		•				Assessment of the Tombarello site is ongoing
		•				Completed Green Communities annual reporting for 2020 with REPA Grant funding
					•	Targeted business outreach
					•	EDA Application - Lupoli Companies Public Works Grant
					•	EDA Application - Lawrence Partnership's Revolving Test Kitchen
	•					TIP - Haverhill St./Lawrence St. Intersection road safety audit
	•					TIP - Development of Amesbury St. two-way reconstruction project - (candidate project)
	•					TIP - Manchester/Lawrence rail trail project
	•					TIP - South Broadway/Mt. Vernon St. Intersection project
•					TIP - South Broadway/Merrimack St. Intersection project	
•					TIP - East Haverhill St./Marston St. intersection project (candidate project)	
Merrimac			•			Developing prototype document management system
			•			Completed MVP Workshops and produced summary of findings
			•			Updated parcel data to FY2020
			•			Assistance with US Census/BOS municipal boundary confirmation
	•					Transit application for Senior Center
		•				Coastal Metals site cleanup in progress utilizing EPA Brownfields RLF funding
	•				Conducted MVP planning process and submitted Summary of Findings for MVP designation	
	•				Completed Green Communities annual reporting for 2020 with REPA Grant funding	
Methuen			•			Assistance providing data via MIMAP
			•			Provided municipal boundary records and parcel-related data to MassGIS for boundary discrepancy
			•			Working with Planning and Conservation staff to update open space layer and maps
			•			Added census and environmental justice datasets to MIMAP
		•				Brownfields assessment at the DPW garage which is slated for demolition and contains asbestos
	•				•	Small business inventory
	•				TIP - Burnham Rd./Riverside Drive intersection improvements	
N. Andover			•			Exploration of Nearmap imaging product
			•			Completed draft maps for FY2021 parcel update
		•	•			Conducting HMP/MVP planning process including online virtual meetings using StoryMap
	•					TIP - Route 114 Reconstruction project
				•	Targeted business outreach	
Newbury			•			Provided draft maps for FY2021 parcel update
			•			Provided technical assistance for Stormwater Inspector mobile app
		•				Providing Green Communities designation assistance w/ REPA grant
	•					Border to Boston Trail: Byfield to Newburyport Commuter Rail Station
Newburyport			•			Updated zoning data on MIMAP, completed FY2020 parcel update
			•			Created public-facing map service for permit system integration
			•			Assisting with coding pipe/valve data for valve verification project
			•			Create tri-town (Amesbury/Newburyport/Salisbury) hydrant access mobile application
	•					TIP - Route 1 Rotary Reconstruction/Route 1 Pedestrian Crossing
		•				Assisting with Green Communities energy analysis with consultant assistance through REPA grant funding
		•				Brownfields assessment at the former National Guard Maintenance Garage and the Wastewater Treatment Plant
	•					TIP - Route 1/Merrimack Street Intersection Improvements (candidate project)
	•				Early Alert System with EOEEA funding	

# Project List

2020 MVPC ACTIVITIES						
	Community	Transportation	Environment	GIS	Comm & Econ Dev	Projects
Rowley			•			Worked with RMLP to update electrical system maps
			•			Completed FY2021 parcel update
		•	•			Scheduled, conducted and completed MVP work, submitted Summary of Findings
		•				MS4 support - O&M plans for facilities and SWPPP for DPW garage and light plant sites
		•				Green Communities designation assistance w/ REPA grant
		•				Central Street reconstruction (proposed project)
		•				TIP - Route 1/Glen St. intersection signalization
Salisbury			•			Assisting DPW in developing Salisbury-centric GIS ecosystem
			•			Providing data integration services for private water service and billing company
			•			Mapped and analyzed municipal sewer expansion fee structure for Route 1
			•			Create tri-town (Amesbury/Newburyport/Salisbury) hydrant access mobile application
			•			Assembled CRS renewal maps and provided analysis
		•				Green Communities reporting assistance with REPA grant
		•				TIP - Route 1 reconstruction project
W. Newbury			•			Providing support for MS4 through mobile app deployment, coordination with consultants
			•			Produced long-range Capital Improvement Plan map
			•			Completed historic survey mapping for the Historic Commission
			•			Prepared parking safety/planning maps for DPW
			•			Assembled parcel data research for proposed municipal kayak/boat launch
			•			Submitted route alteration requests on behalf of Town for rural road routing issue
		•				MS4 support
		•				Green Communities reporting assistance with REPA grant
		•				Conservation restriction monitoring
		•				Sidewalk inventory and condition data collection
	•				Changing Google Maps/Waze Routing given the above facility is closed	
Multi-jurisdictional		•	•			Received AARC grant for outreach to low-income residents on energy efficiency programs
			•			Complete Streets - Produce story map to highlight projects by theme
			•			Working with ECGA to deploy parcel prioritization data
			•			Produced regional story map resources to support MVPC MVP program
			•			Created interactive maps page on mvpc.org website
			•			Provided mapping support and developed interactive apps for Great Marsh monitoring projects
			•			Distributed 2020 imagery and basemaps from April Pictometry flight
			•			EDA Revolving Loan Fund - small business gap financing
		•				Merrimack River District Commission
			•			MVRTA - completed route map updates
		•	•			Updated Park & Ride story map
		•				Stormwater Collaborative/MS4 Permit Support
			•			Regional Subsidized Housing Inventory
		•				Hazard Mitigation Plan update - applied to MEMA/FEMA under BRIC Grant
			•	•		Merrimack Valley Cultural Planning Project: Place and Meaning 2020
			•	•		EDA - Comprehensive Economic Development Strategy Implementation
			•	•		EDA - Data Portal Launch
			•	•		Targeted Economic Development Strategy - Andover, North Andover, Lawrence Coalition
		•	•			Pavement and sidewalk management
			•			Developed watershed catchment area delineation process
		•			Created regional Open Space and Conservation Restriction monitoring app	
		•	•		We Are MV - Economic Development and Marketing Site	

# Our Commissioners



Amesbury  
Robert Laplante, Secretary  
Angela Cleveland, Alternate



Andover  
Lisa Schwarz



Boxford  
Jim Barnes, Treasurer  
Joe Hill, Alternate



Georgetown  
John Cashell



Groveland  
Rebecca Oldham



Haverhill  
Ken Cram  
William Pillsbury, Alternate



Lawrence  
Pedro Soto  
Abel Vargas, Alternate



Merrimac  
John Thomas



Methuen  
Kathleen Colwell, Vice Chair  
William Buckley, Alternate



Newbury  
Martha Taylor  
Larry Murphy, Alternate



Newburyport  
Rick Taintor  
Bonnie Sontag, Alternate



North Andover  
Rick Byers



Rowley  
Bob Snow, Chairman  
Joe Perry, Alternate



Salisbury  
Lou Masiello  
Jerry Klima, Alternate



West Newbury  
Brian Murphey



Rep-at-Large  
Brad Buschur  
Heather McMann, Alternate

# MVPC Team



MaryKay Beninati  
Sr. Transportation  
Planner



Ian Burns  
Targeted Economic  
Development Specialist



Jen Dunlap  
Finance Administrator



Betsy Goodrich  
Sr. Transportation  
Planner



Jennifer Hughes  
Environmental  
Program Manager



Anthony Komornick  
Transportation  
Program Manager



Nancy Lavalley  
Office Administrator



Steve Lopez  
GISP, Sr. GIS Analyst



Mikayla Minor  
GIS Analyst



Daniel Ovale  
Field Services  
Specialist



Theresa Park  
Executive Director



Peter Phippen  
Coastal Coordinator



Nate Robertson  
Community & Economic  
Development Planner



Jim Terlizzi  
Transportation  
Engineer



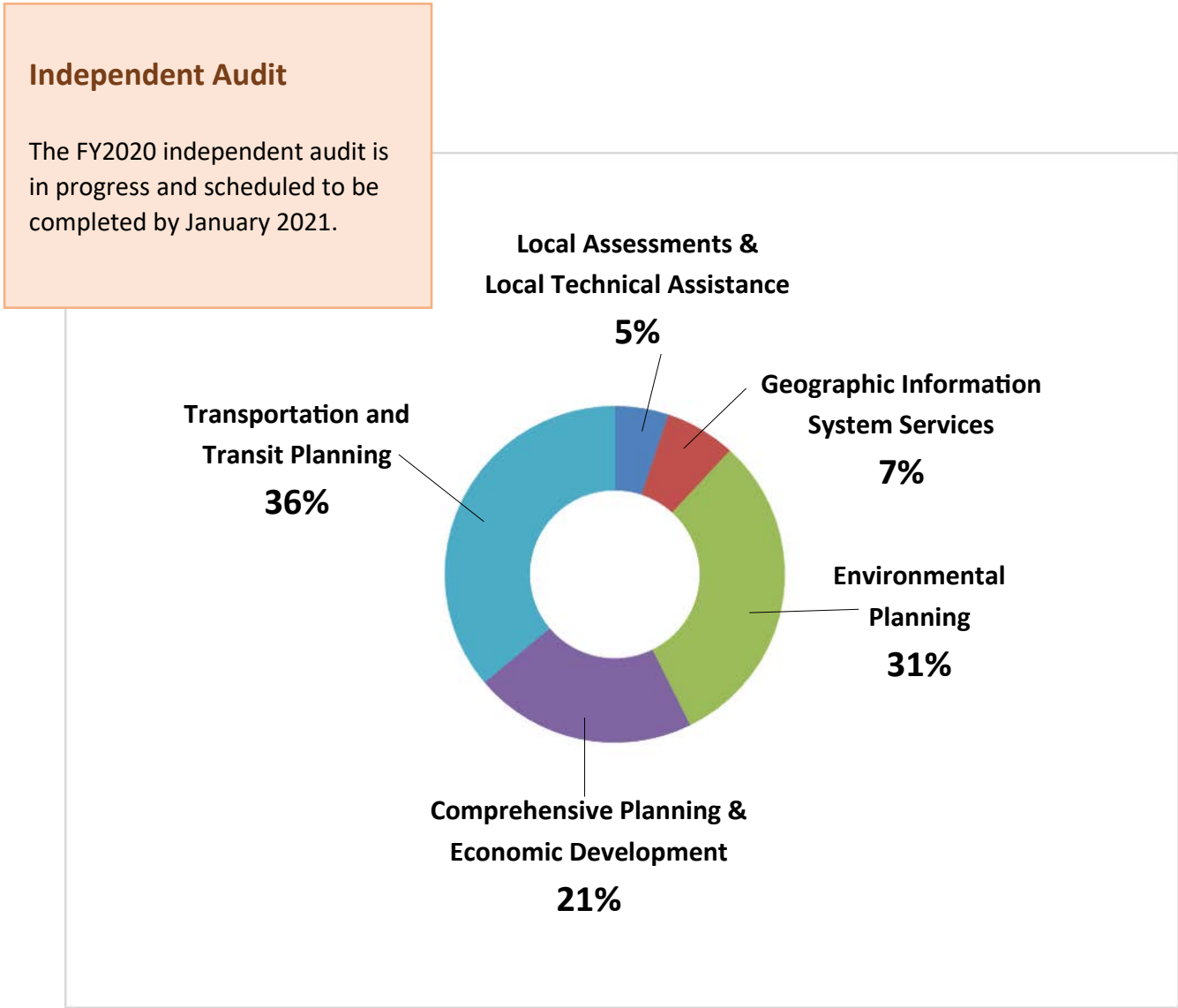
Jerrard Whitten  
GISP, GIS/IT  
Program Manager

# Finance & Administration

## Distribution of Funding for Fiscal Year 2020

MVPC’s operating funds for FY2020 supported a broad range of planning and technical services in the five major functional areas shown in the image below.

Ninety-five Percent (95%) of our budget comes from a variety of largely non-local sources, including state and federal grants as well as contracts with selected non-profit organizations and businesses that support MVPC’s mission. Local assessments to our member communities make up the remaining five (5%). MVPC used these local funds as a match to leverage the ninety-five percent (95%) of outside funding brought into the region by the MVPC staff.



# Our Funding Partners

## **Federal**

EDA-Economic Development Administration  
EPA-Environmental Protection Agency  
FHA-Federal Highway Administration  
FEMA-Federal Emergency Management Administration  
NOAA-National Oceanic and Atmospheric Administration  
U.S. Fish & Wildlife Services

## **State**

CZM-Coastal Zone Management  
DEP-Department of Environmental Protection  
DHCD-Department of Housing and Community Development  
DMF-Division of Marine Fisheries  
DOER-Department of Energy Resources  
EOEEA-Executive Office of Energy and Environmental Affairs  
MassDOT-Massachusetts Department of Transportation  
MEMA-Massachusetts Emergency Management Agency

## **Local**

MVRTA-Merrimack Valley Regional Transit Authority

## **Non-Profit**

ECCF-Essex County Community Foundation  
Greenscapes NorthShore  
Lawrence Partnership  
National Wildlife Federation



*Plan • Innovate • Promote*

