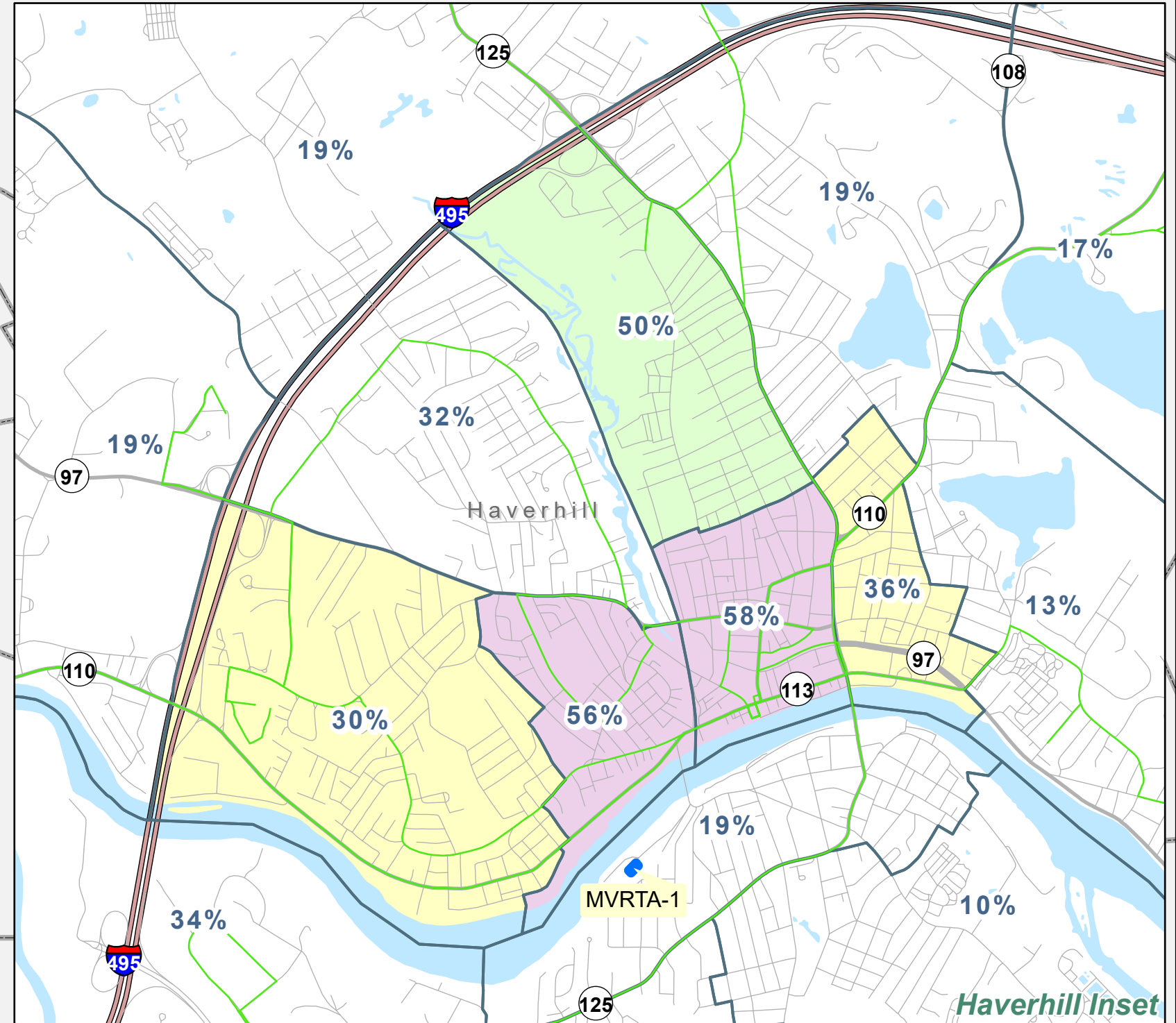
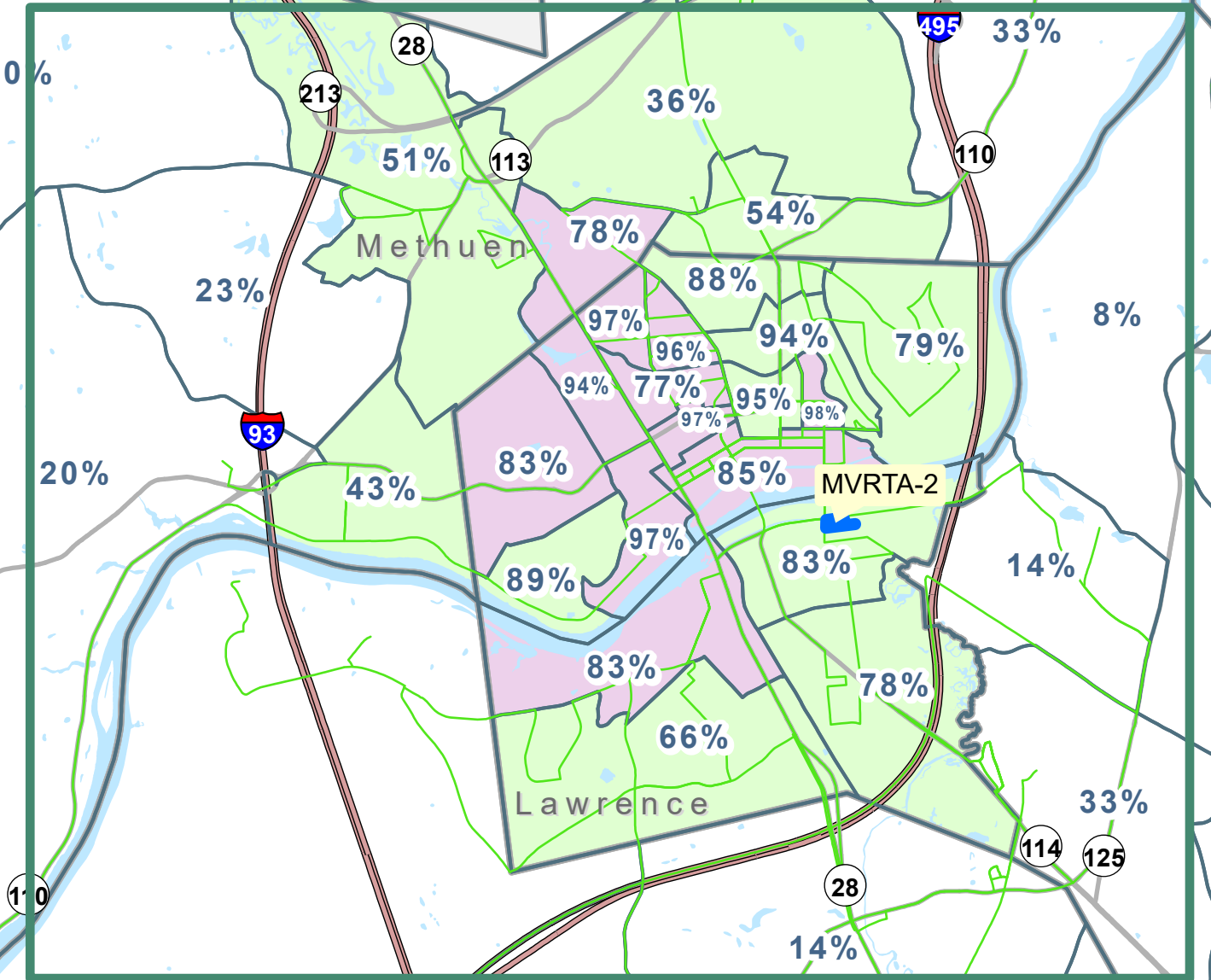
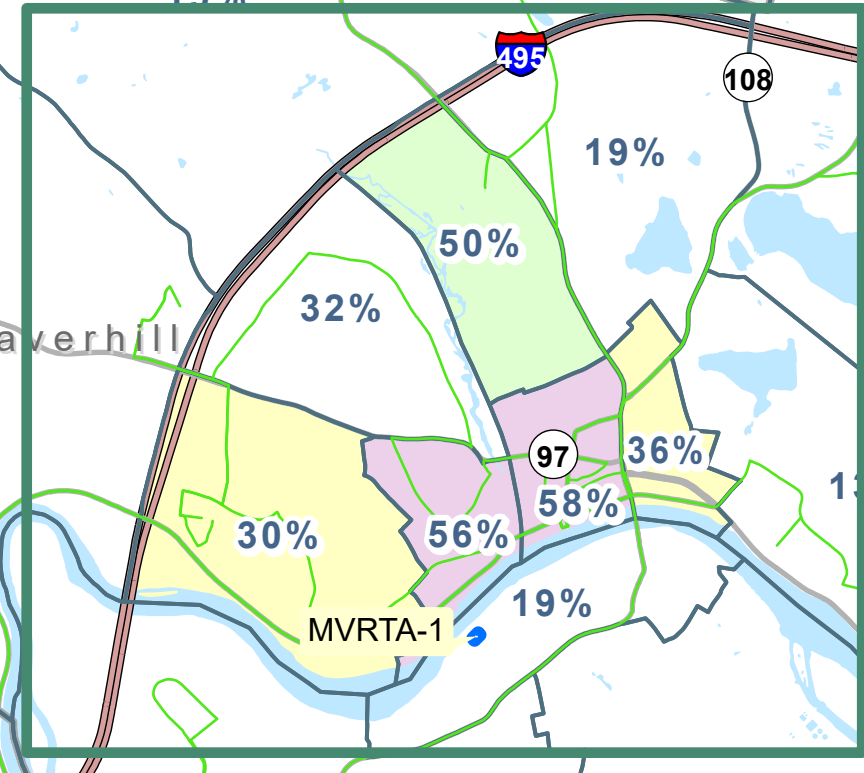
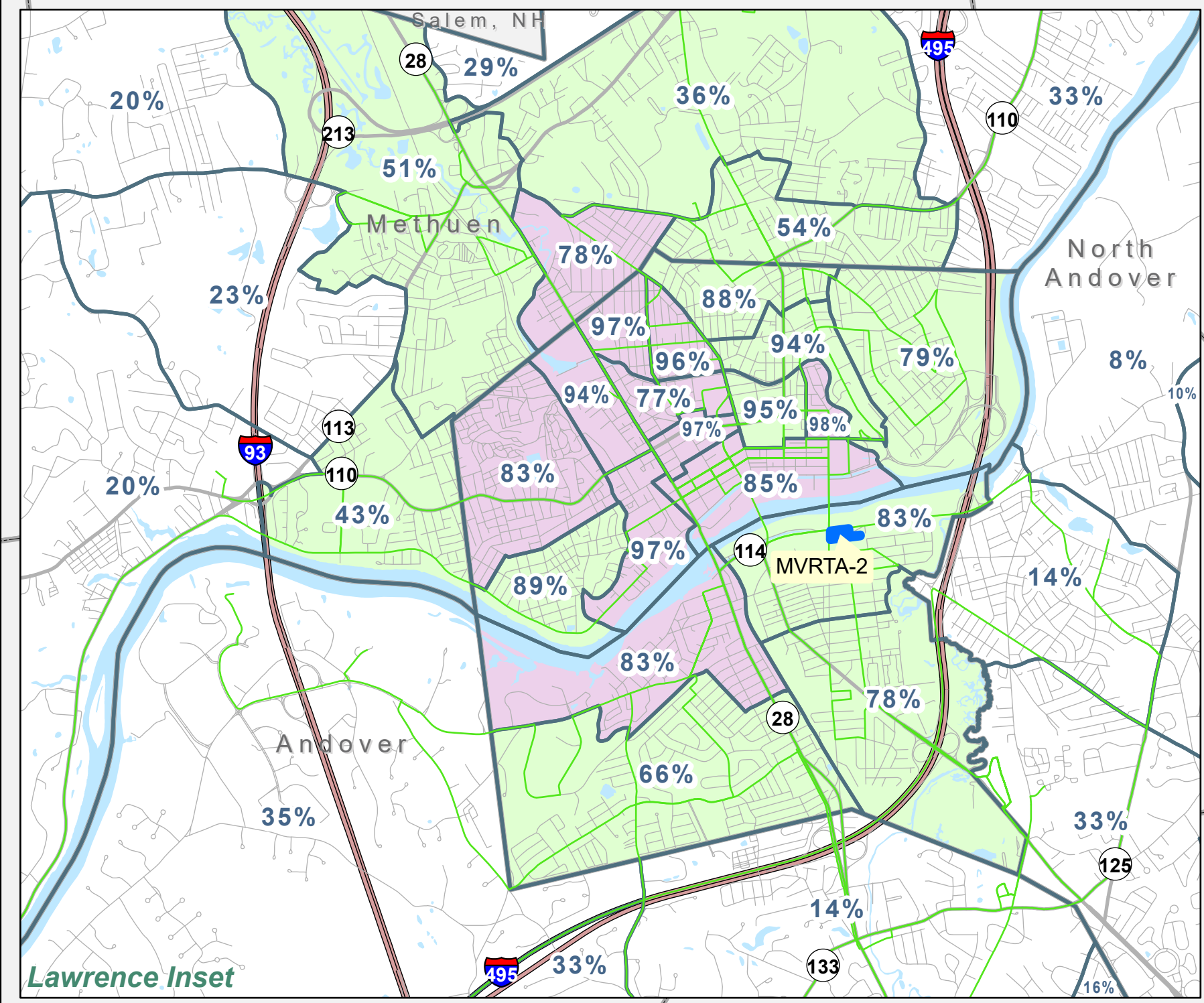
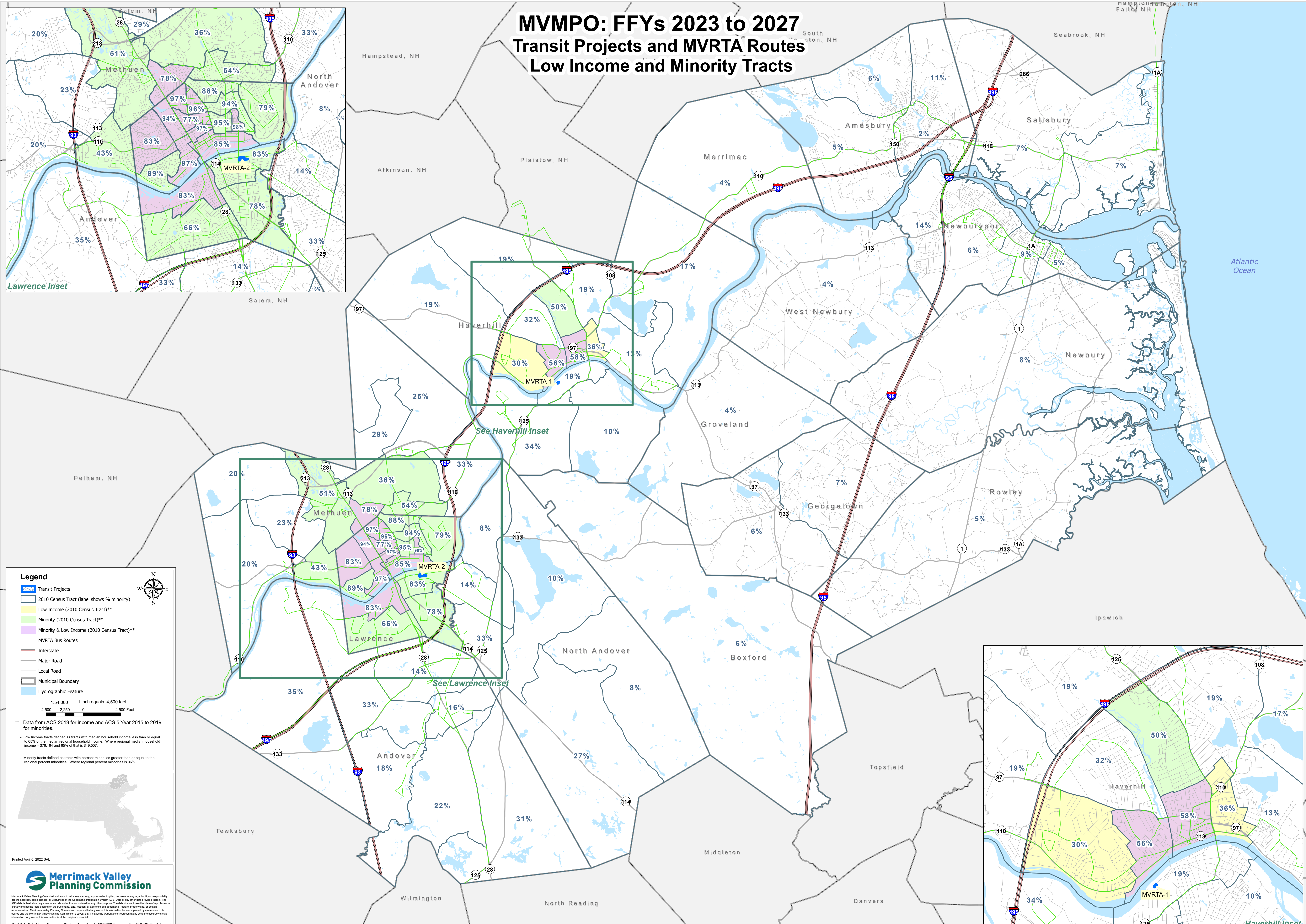


MVMPO: FFYs 2023 to 2027 Transit Projects and MVRTA Routes Low Income and Minority Tracts



Legend

- Transit Projects
- 2010 Census Tract (label shows % minority)
- Low Income (2010 Census Tract)**
- Minority (2010 Census Tract)**
- Minority & Low Income (2010 Census Tract)**
- MVRTA Bus Routes
- Interstate
- Major Road
- Local Road
- Municipal Boundary
- Hydrographic Feature

1:54,000 1 inch equals 4,500 feet
4,500 2,250 0 4,500 Feet

** Data from ACS 2019 for income and ACS 5 Year 2015 to 2019 for minorities.

- Low Income tracts defined as tracts with median household income less than or equal to 60% of the median regional household income. Where regional median household income = \$70,164 and 60% of that is \$42,097.
- Minority tracts defined as tracts with percent minorities greater than or equal to the regional percent minorities. Where regional percent minorities is 36%.

Printed April 6, 2022 SAL

Merrimack Valley Planning Commission does not make any warranty, expressed or implied, nor assume any legal liability or responsibility for the accuracy, completeness, or usefulness of the Geographic Information System (GIS) data or any other data provided herein. The GIS data is illustrative only and should not be considered for any other purpose. The data does not take the place of a professional survey and has legal bearing on the land title, site location, or accuracy of geographic features, property lines or political representation. Merrimack Valley Planning Commission requests that any use of this information be accompanied by a reference to its source and the Merrimack Valley Planning Commission's caveat that it makes no warranties or representations as to the accuracy of said information. Any use of this information is at the user's own risk.

IGIS Data & Archives - Documents\Project Repository\MVPC\2022\Transportation\MVMPO_EquityAnalysis