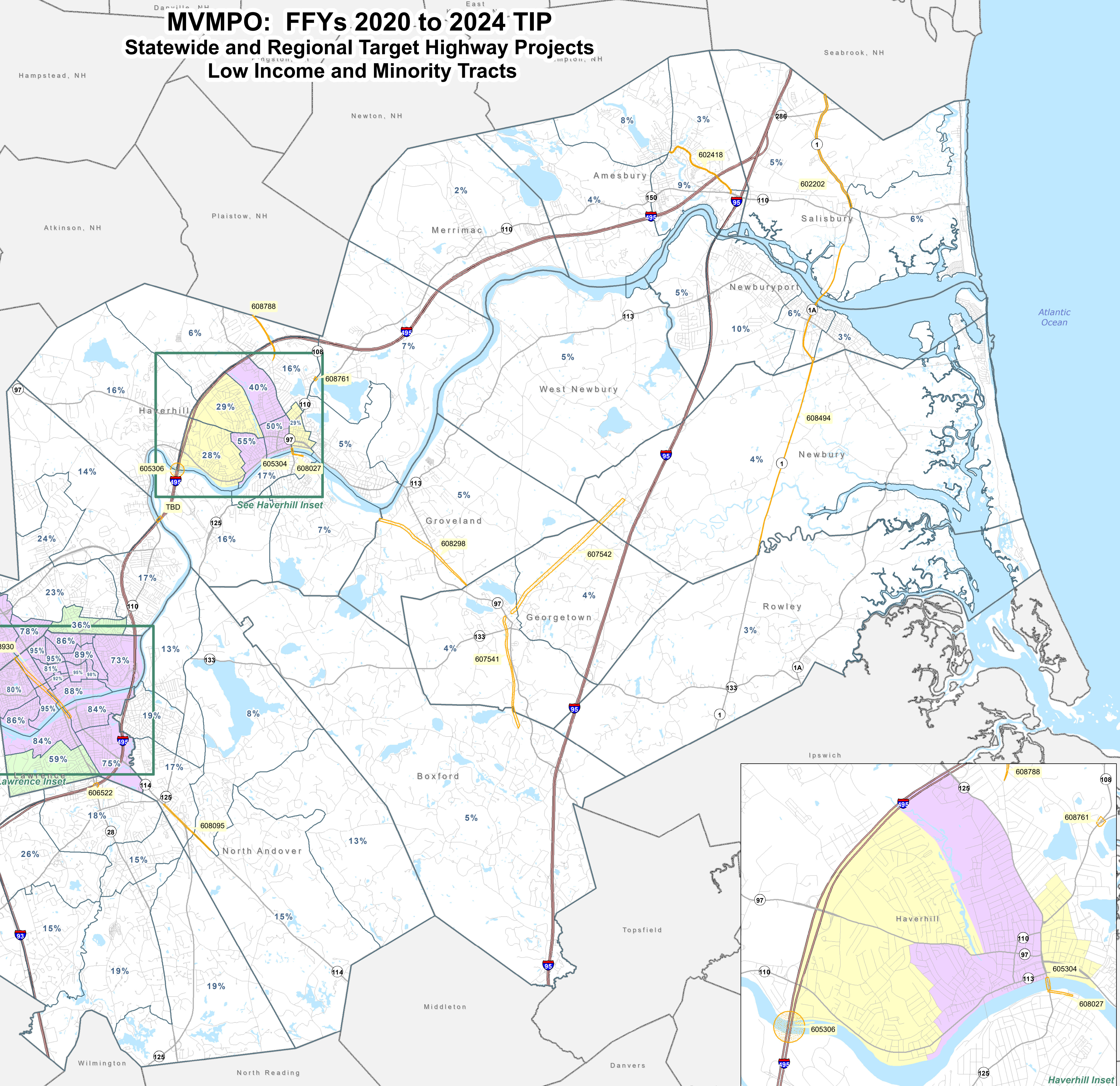
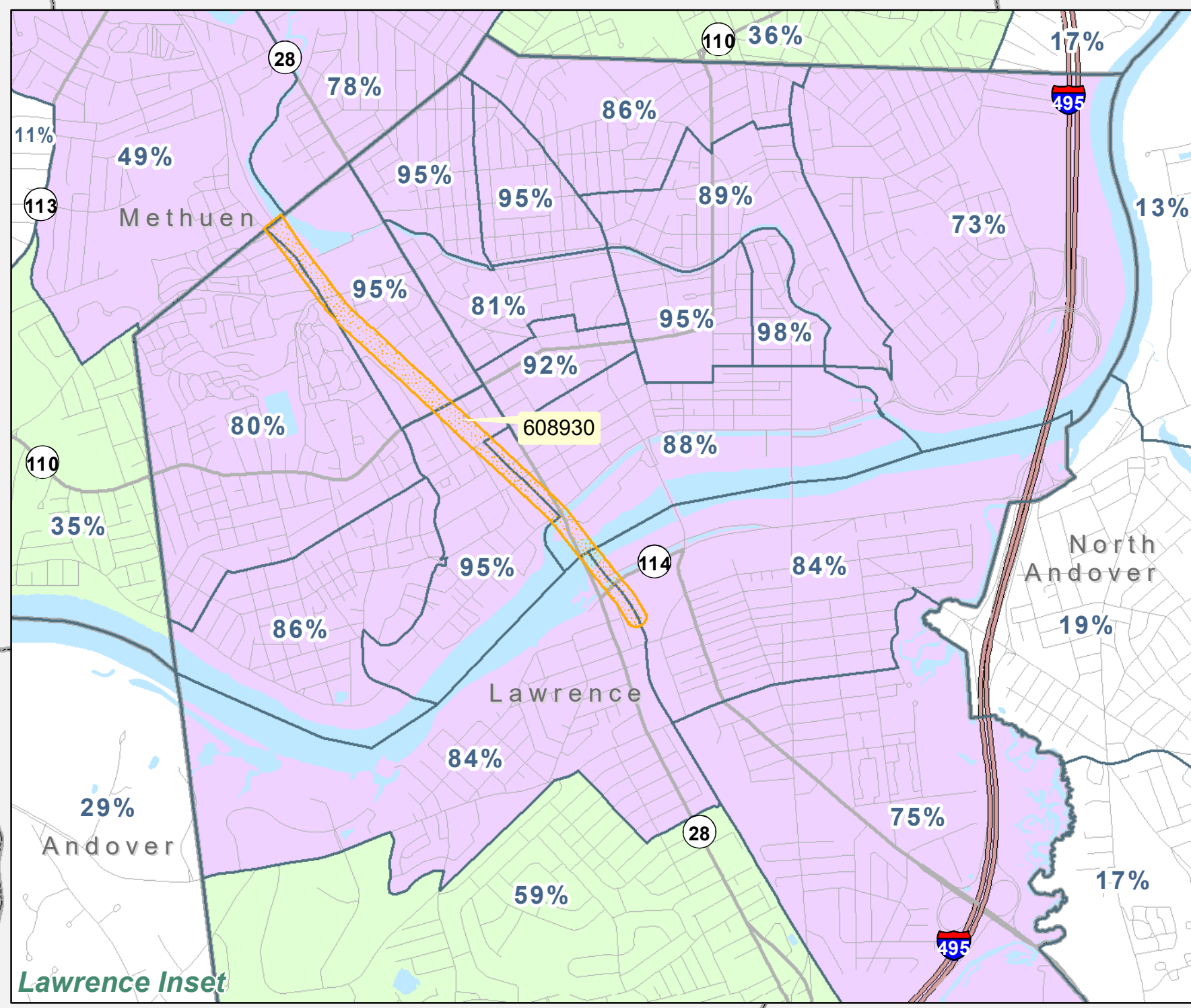


MVMPO: FFYs 2020 to 2024 TIP

Statewide and Regional Target Highway Projects

Low Income and Minority Tracts



Legend

- Transportation Improvement Project
- Low Income (2010 Census Tract)**
- Minority (2010 Census Tract)**
- Minority & Low Income (2010 Census Tract)**
- 2010 Census Tract (label shows % minority)
- Municipal Boundary
- Hydrographic Feature
- Interstate
- Major Road
- Local Road

1:54,000 1 inch = 4,500 feet
4,500 2,250 0 4,500 Feet

** Data derived from 2011 - 2015 American Community Survey.
- Census tracts identified as Title VI low income are equal to or less than 80% of the MVMPC regional median income of \$75,532
- Census tracts with a minority population greater than or equal to 32% are considered Title VI census tracts. This percentage is based on the MVMPC regional average for minority populations (32%)

Printed April 29, 2019 SAL

Merrimack Valley Planning Commission
plus a little more

J:\ArcGIS\MVMPC\2019\MVMPO_2020_2024_State&RegionalHighwayProjects_26x36.mxd

