

MVISION 2050

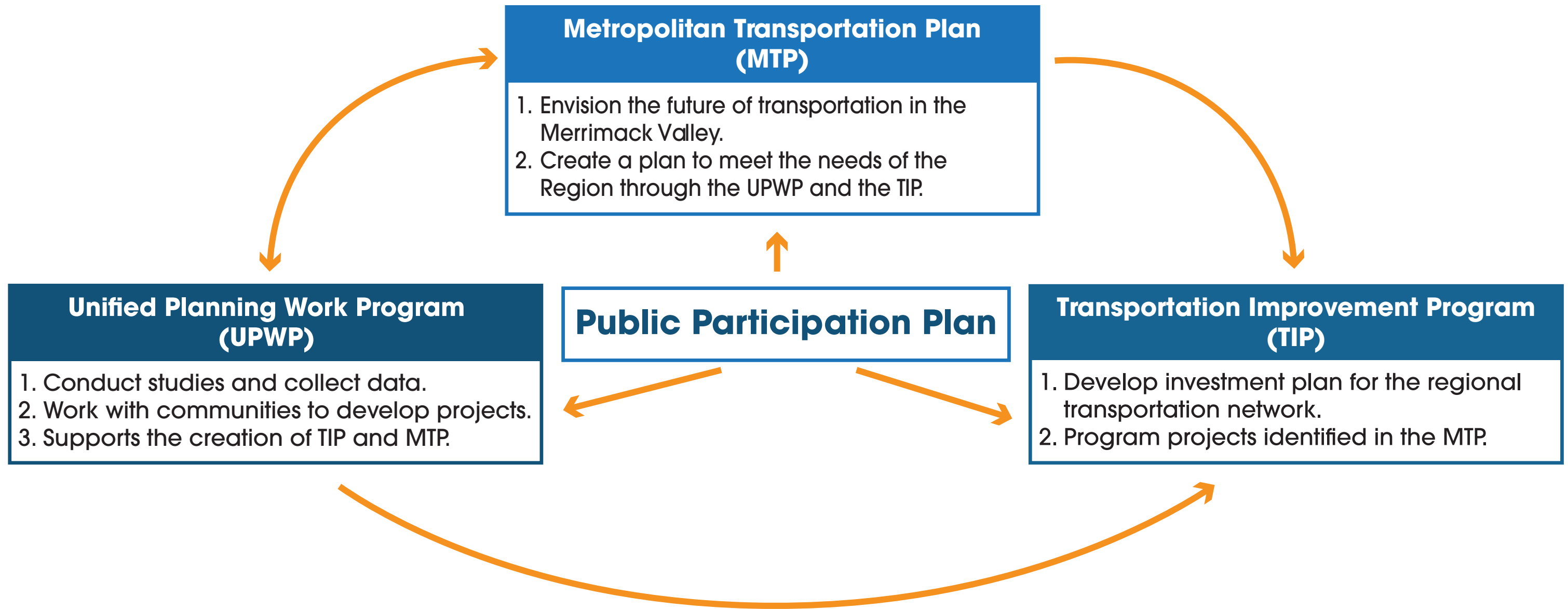


METROPOLITAN TRANSPORTATION PLAN

May 24, 2023

MV MPO

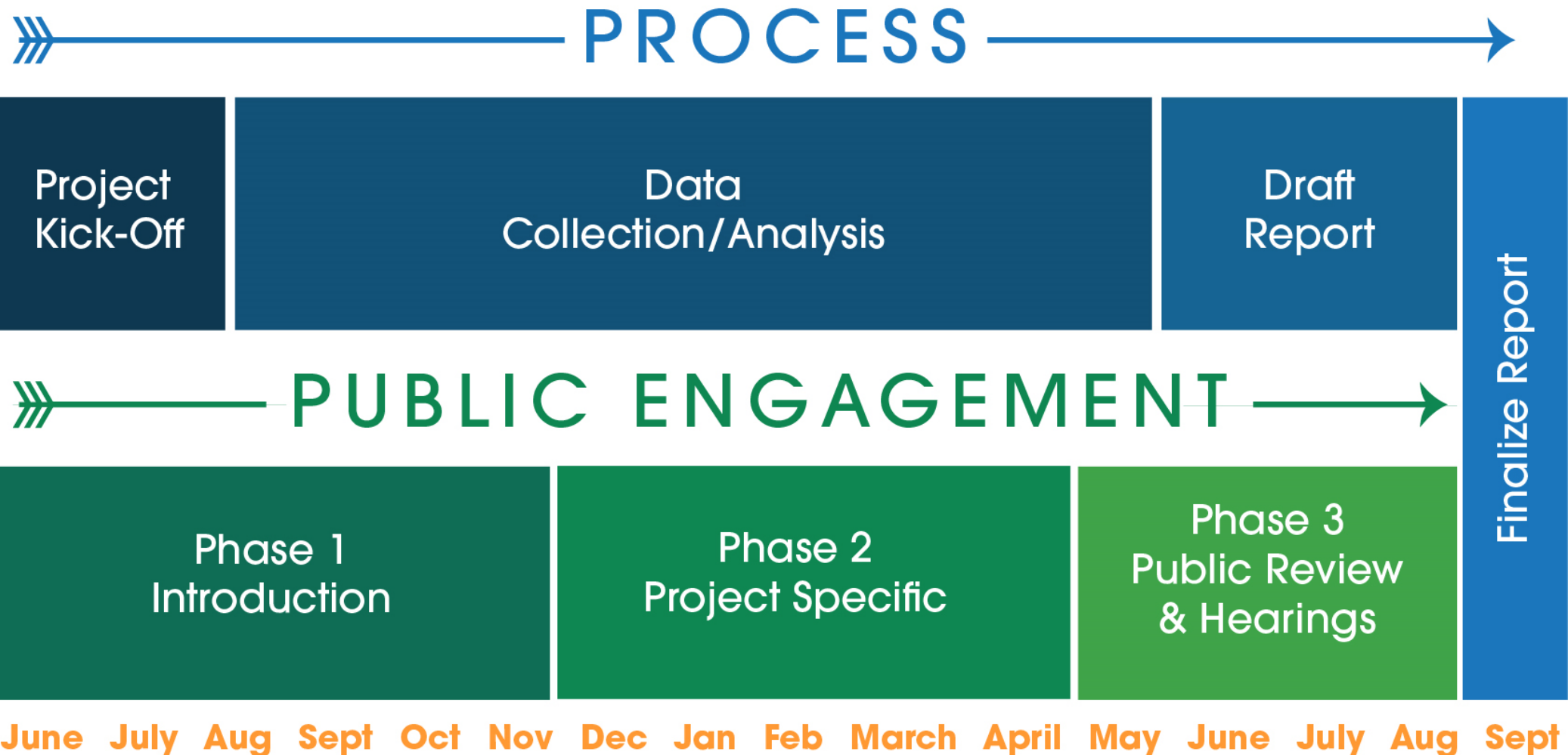
3C Documents Infographic



METROPOLITAN TRANSPORTATION PLAN

- 25-year plan for federally funded transportation projects programmed for implementation.
- Financially Constrained
- Planning horizon: 2023-2050
- Projects must be in the MTP or address the goals or performance measures to be funded through the Transportation Improvement Program (TIP).

MVISION 2050

Questionnaire Overview

Income:

- 17% \$200k+
- 16% \$150-\$199k
- 21% \$100-\$149k
- 14% \$75-\$99k
- 13% \$50-\$74k
- 5% \$35-\$49k
- 3% \$25-\$34k
- 6% \$15-\$24k
- 5% >\$15k

Age:

- 25% 65+
- 20% 55-64
- 23% 45-54
- 12% 35-44
- 12% 25-34
- 5% 18-24
- 3% -18

Self Identify by Race:

- 83% White
- 23% Hispanic/ Latina/o/x
- 3% African American or Black
- 1% Asian
- >1% 2 or More Races

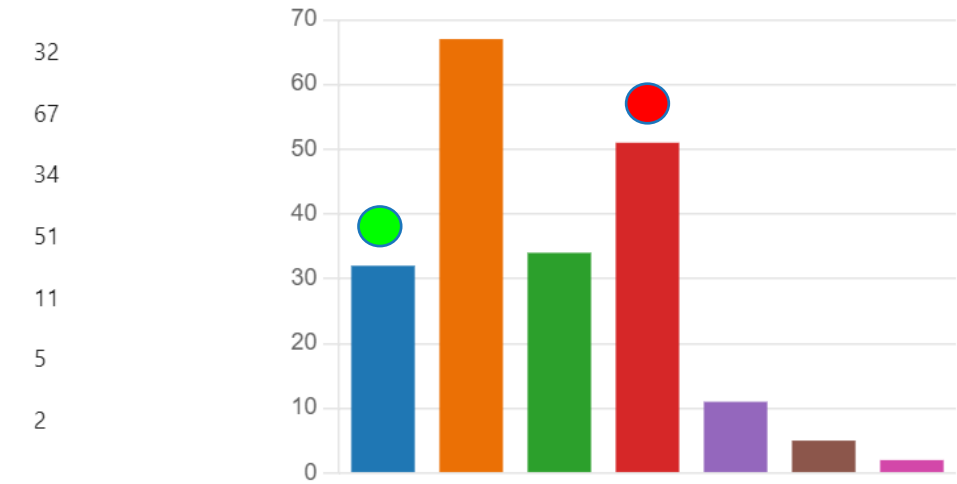
26 identified as a person with a disability

- 58% Female
- 36% Male

17. How many people live in your household including yourself?

More Details

- 1
- 2
- 3
- 4
- 5
- 6
- More than 6



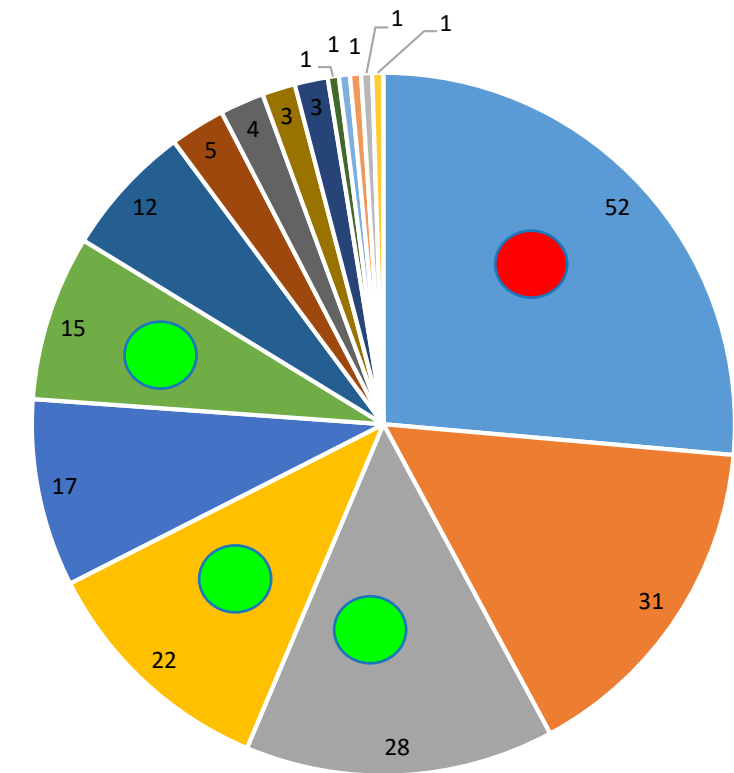
9. How often are you involved in transportation planning projects and programs with MVPC?

- Very often: 11
- Often: 22
- Not very often: 46
- This is my first time: 126



Overrepresented (Red dot)
Underrepresented (Green dot)

Count of Responses by Community



- North Andover
- Methuen
- Haverhill
- Lawrence
- Andover
- Newburyport
- Other
- Rowley
- Groveland
- Amesbury
- Boxford
- Georgetown
- Merrimac
- Newbury
- Salisbury
- West Newbury

Phase 1 Engagement Events

May 10

Methuen Arlington
Neighborhood
Monthly Meeting

May 24

Lawrence Mayor's
Health Task Force
General Meeting

June 4

SALSA Event
in Lawrence

June 9

Metropolitan
Transportation Plan
Kick-Off Meeting

July 23

Andover
Farmers' Market

Aug 9

Andover Robb
Center Event

Aug 11

Lawrence Pa'Lante
Climate Event

Aug 27

Haverhill Farmer's
Market

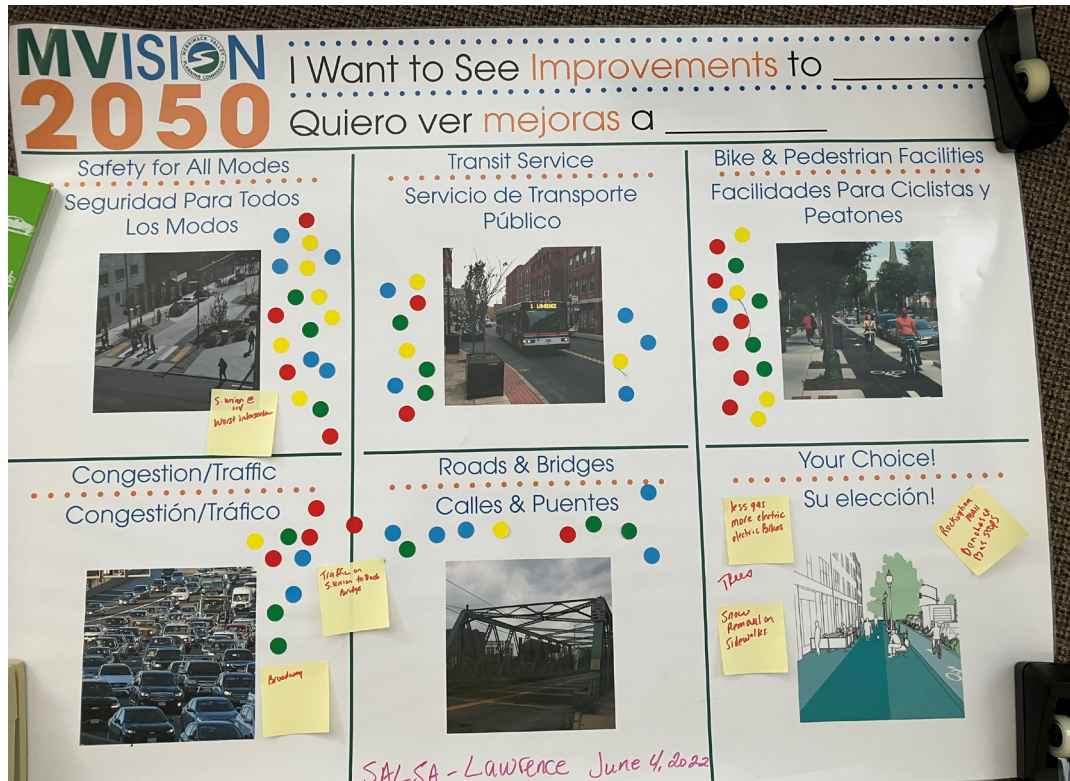
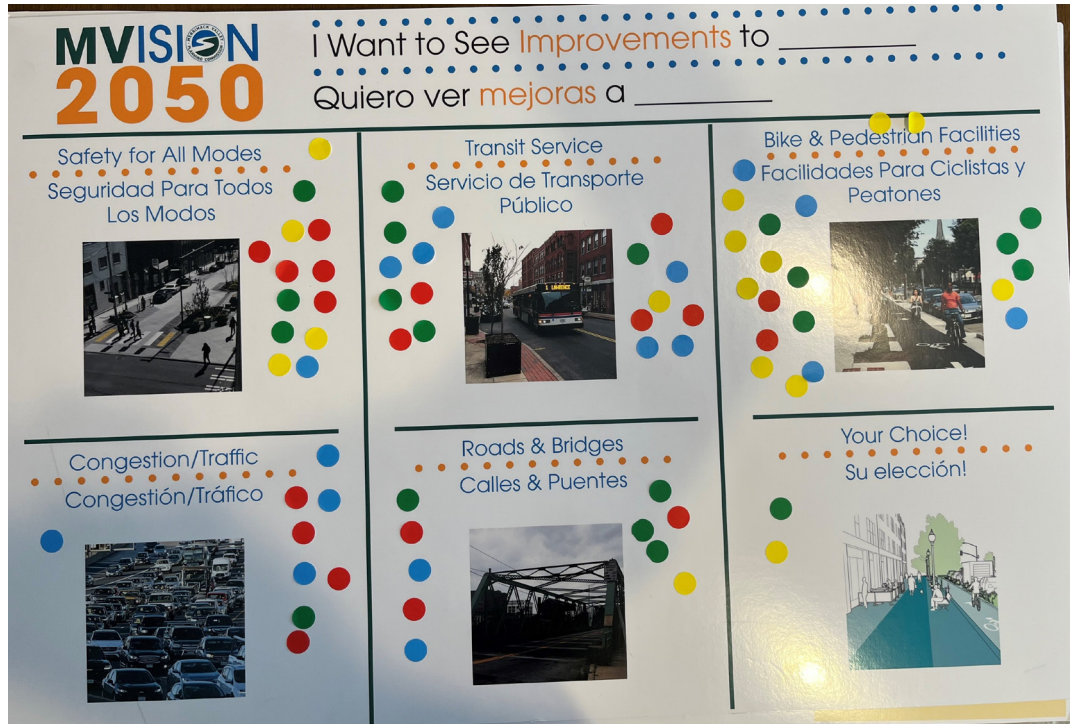
Oct 22

Lawrence
Pa'Lante
Focus Group

Oct 25

Veterans Coffee
Social

145 Attendees - 155 Comments Received.



Public Engagement Comments

Transit

A collection of approximately 40 colorful sticky notes (purple, green, blue, orange) arranged in a grid-like pattern, representing public comments on transit issues. Some notes are grouped together, while others are more isolated.

Traffic/Congestion Issues

A collection of approximately 20 colorful sticky notes (teal, yellow, orange) arranged in a grid-like pattern, representing public comments on traffic and congestion issues. The notes are organized into several small clusters.

Infrastructure issues

A collection of approximately 25 colorful sticky notes (yellow, purple, green, blue, pink) arranged in a grid-like pattern, representing public comments on infrastructure issues. The notes are organized into several small clusters.

Safety issues

A collection of approximately 35 colorful sticky notes (yellow, green, teal, orange) arranged in a grid-like pattern, representing public comments on safety issues. The notes are organized into several small clusters.

Bike and Pedestrian

A collection of approximately 30 colorful sticky notes (yellow, blue, green, orange) arranged in a grid-like pattern, representing public comments on bike and pedestrian issues. The notes are organized into several small clusters.

Questionnaire Takeaways

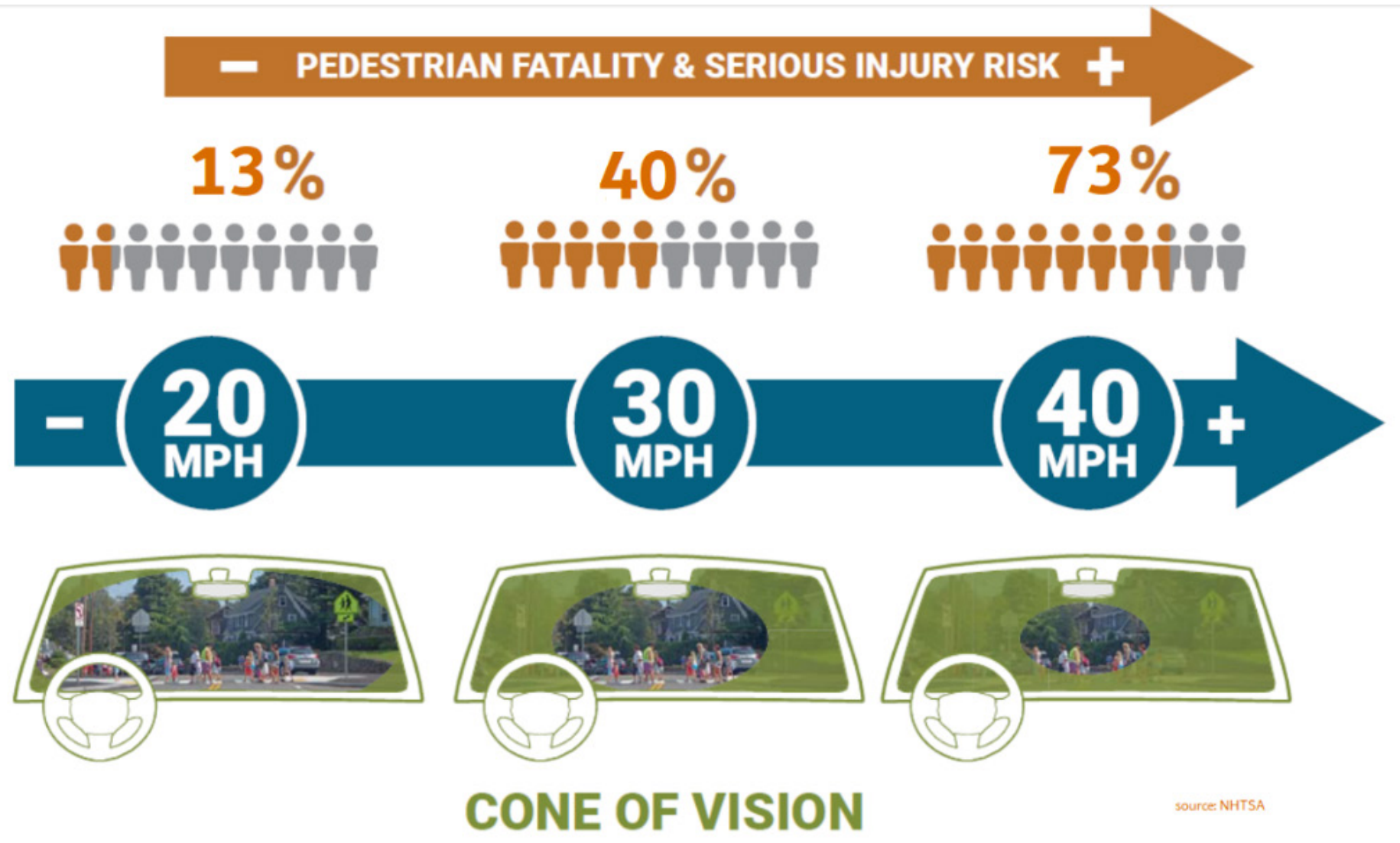
People who identify as Hispanic/Latino/a/x see increased bus frequency as an important factor to mode shift from driving.

Younger respondents people prioritize funding for protected bike lanes and see it as important for mode shift.

Lack of safe sidewalks and crossings ranked highly as a major barrier to the transportation system across the board.

People with disabilities saw infrequent transit service and lack of safe sidewalks and crossings as major barriers and prioritized spending on those projects.

We Heard that speed is a safety issue




Speeding through our neighborhood	Vehicles driving too fast and not stopping for pedestrians in the crosswalk.	Car speeds are very high along roads with residential and commercial businesses which creates an unfriendly environment for all people outside of cars.
Speeding cars	Speed of local traffic on side roads used to divert from Main Road traffic congestion	people drive too fast, difficult to see out of intersections.
Speed and safety	Speeders and reckless driving	people driving to fast

We heard a need for bike infrastructure

<p>Lack of safe bike routes</p> <p>Bikes</p>	<p>I ride my bicycle much less than in the past due to an increase in cyclists being hit.</p> <p>Bikes</p>	<p>Streets that have bikes painted on them but offer no meaningful barriers for bikes</p> <p>Bikes</p>	<p>More bike racks!</p> <p>Bikes</p>
<p>Dangerous road conditions for non-powered bikers</p> <p>Bikes</p>	<p>I'd like to reduce my car usage, but an overwhelming lack of safe bike routes stops me from being able to do it. We need big investments in multi-use trails as well as safe & separated (paint is not protection!) bike lanes.</p> <p>Bikes</p>	<p>Need more dedicated bike and walking paths. Need to make it easier to commute by bike. Look to Sweden and Norway for inspiration.</p> <p>Bikes</p>	<p>More & protected bike lanes</p> <p>Bikes</p>
<p>Lack of safe bicycle routes to shopping</p> <p>Bikes</p>	<p>Don't feel safe taking my bike as transportation, or encouraging my kids to, even though I want to.</p> <p>Bikes</p>	<p>Lack of "protected" bicycle lanes. There are entire regions of the MV where I cannot safely travel by bike. Our transportation policy moving forward must prioritize moving "people" not moving "vehicles". Bicycles and pedestrians deserve equal consideration to what we currently give private cars.</p> <p>Bikes</p>	<p>It is too dangerous to ride a bike in Lawrence right now.</p> <p>Bikes</p>

BICYCLIST DESIGN USER PROFILES

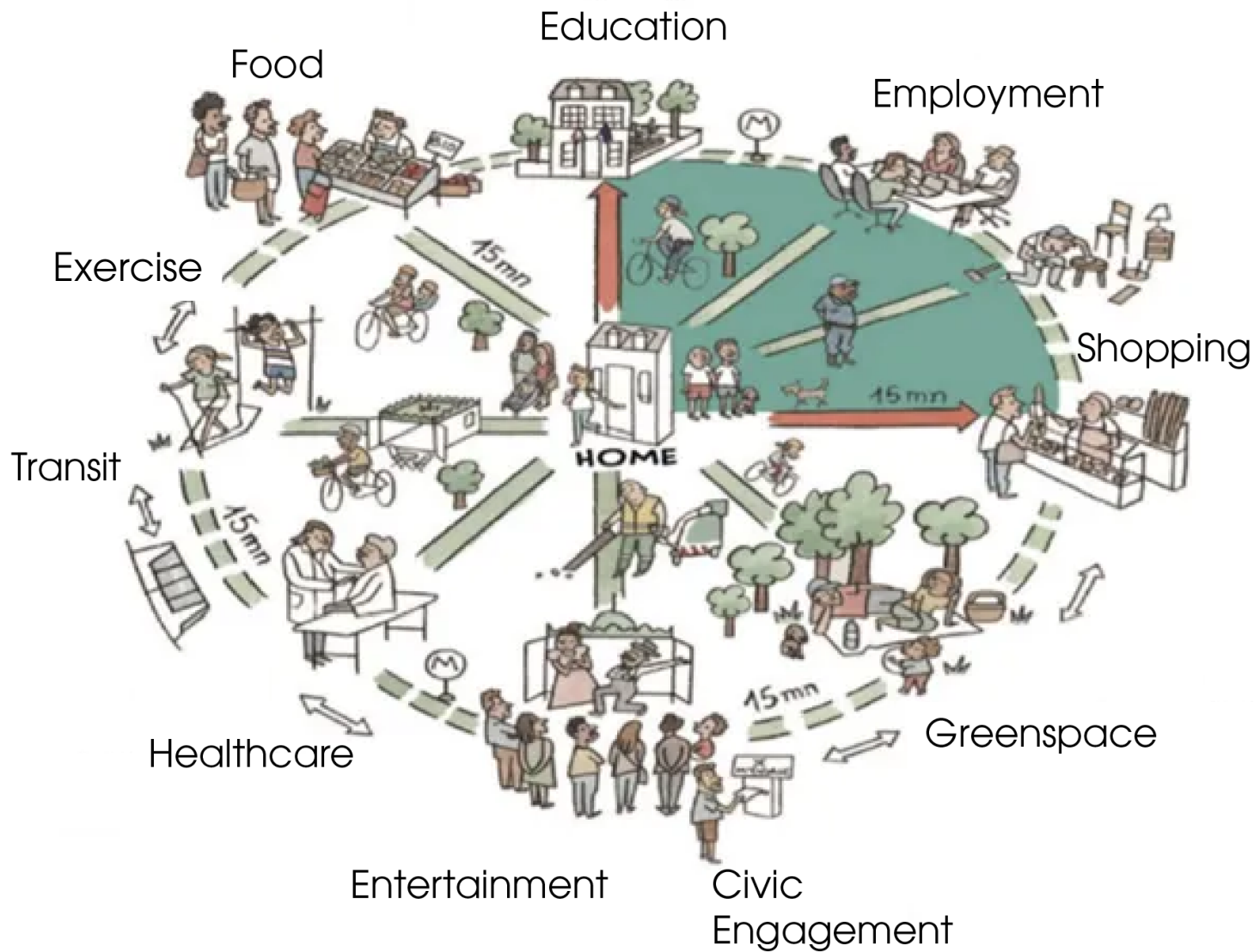
<p>Interested but Concerned 51%-56% of the total population</p> <p>Often not comfortable with bike lanes, may bike on sidewalks even if bike lanes are provided; prefer off-street or separated bicycle facilities or quiet or traffic-calmed residential roads. May not bike at all if bicycle facilities do not meet needs for perceived comfort.</p>	<p>Somewhat Confident 5-9% of the total population</p> <p>Generally prefer more separated facilities, but are comfortable riding in bicycle lanes or on paved shoulders if need be.</p>	<p>Highly Confident 4-7% of the total population</p> <p>Comfortable riding with traffic; will use roads without bike lanes.</p>
--	--	--



LOW STRESS TOLERANCE | **HIGH STRESS TOLERANCE**

We heard a need for sidewalks

15 minute walk or bike to...



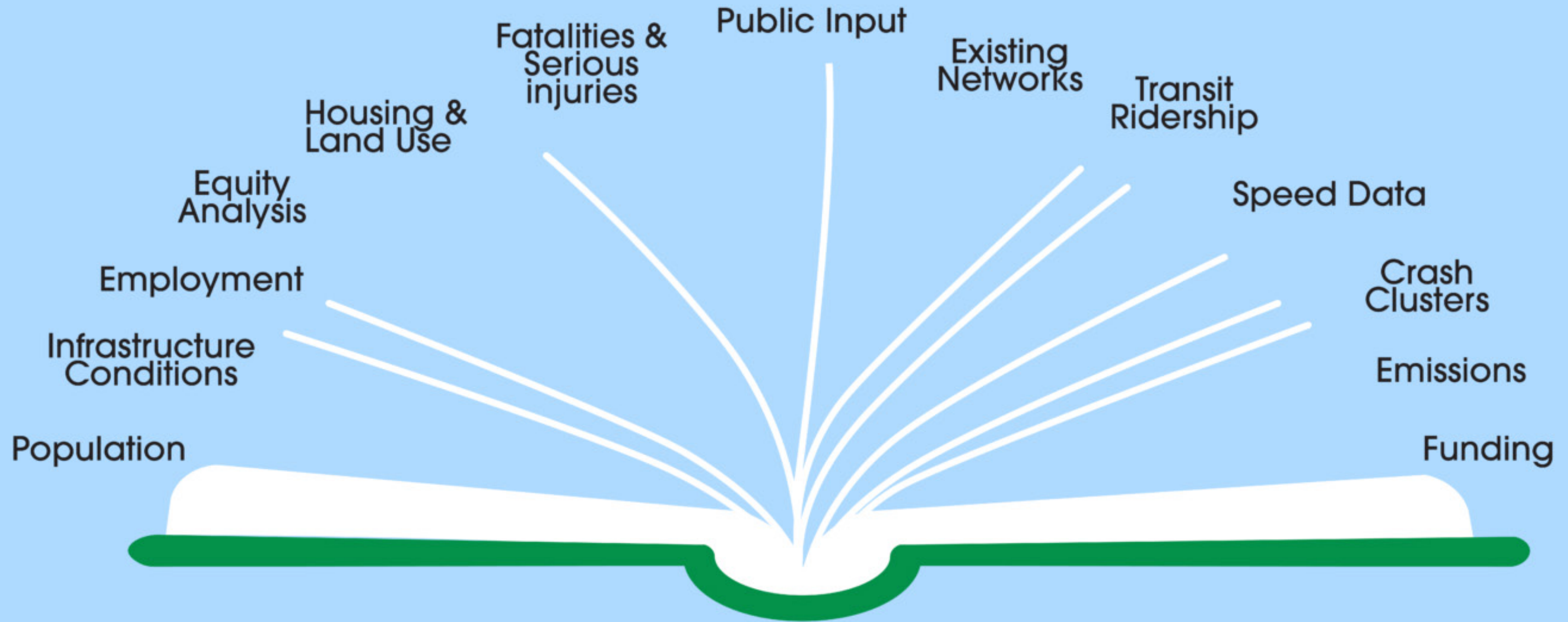
<p>Missing sidewalks in my neighborhood</p> <p>General Sidewalk Comm...</p>	<p>Walking to the bus stop is a challenge.</p> <p>General Sidewalk Comm...</p>	<p>Most places feel safe to walk, except near McDonalds in Lawrence.</p> <p>General Sidewalk Comm...</p>
<p>Walking is difficult due to the poor quality of the sidewalks</p> <p>General Sidewalk Comm...</p>	<p>Poor pedestrian connections to parks, downtowns, and community assets.</p> <p>General Sidewalk Comm...</p>	<p>Several people said it was very easy to walk near where they live.</p> <p>General Sidewalk Comm...</p>
<p>Dangerous pedestrian crossings</p> <p>General Sidewalk Comm...</p>	<p>No sidewalks</p> <p>General Sidewalk Comm...</p>	<p>We need better/more sidewalks!</p> <p>General Sidewalk Comm...</p>
<p>Unsafe pedestrian conditions</p> <p>General Sidewalk Comm...</p>	<p>People feel as though there is a lack of sidewalks in Andover.</p> <p>General Sidewalk Comm...</p>	<p>lack of sidewalks</p> <p>General Sidewalk Comm...</p>

We heard a need for better transit

<p>Need affordable access to commuter rail and more frequent service.</p> <p>Commuter Rail/Rail</p>	<p>Also, Commuter Rail is comically bad: slow, infrequent, expensive. We need to make that amazing and build all other modes to get people efficiently on trains. And allow them to bring their bikes for connection on the other end, all day long!</p> <p>Commuter Rail/Rail</p>
<p>The train!!! Needs to be later so people can actually get home from the city on weekends</p> <p>Commuter Rail/Rail</p>	<p>Reverse commute by train is problematic (at least on MBTA Haverhill line)</p> <p>Commuter Rail/Rail</p>
<p>Reverse commute from boston transit to borders of town</p> <p>Commuter Rail/Rail</p>	<p>High speed rail</p> <p>Commuter Rail/Rail</p>

<p>Late buses</p> <p>Timing/Frequency</p>	<p>No Bus services after 7pm and we still don't have Sunday services back yet back due to driver shortage.</p> <p>Timing/Frequency</p>	<p>They would take transit if it were more accessible.</p> <p>Awareness/Bus Stops</p>	<p>Need a workshop on how to use the phone to get information on the bus (google maps)</p> <p>Awareness/Bus Stops</p>	<p>On person used to use Ride Match.</p> <p>Awareness/Bus Stops</p>
<p>The buses don't run long enough.</p> <p>Timing/Frequency</p>	<p>More consistent buses</p> <p>Timing/Frequency</p>	<p>Not enough information about where the bus goes</p> <p>Awareness/Bus Stops</p>	<p>The bus stop sign could have the map to show where it goes.</p> <p>Awareness/Bus Stops</p>	<p>It would be great if there was an app that had all the information.</p> <p>Awareness/Bus Stops</p>
<p>not enough busses early and late in the day and not frequent transit service</p> <p>Timing/Frequency</p>	<p>I like that it runs every half hour</p> <p>Timing/Frequency</p>	<p>No bus stops, so don't know where to pick up the bus.</p> <p>Awareness/Bus Stops</p>	<p>Need bus schedule replenished. Muoi prints them out from on-line to hand out.</p> <p>Awareness/Bus Stops</p>	<p>Need coordinated information about all the different services for veterans.</p> <p>Awareness/Bus Stops</p>

The Data We Collect



To Tell the Story

Vision

The MVMPO envisions a multi-modal transportation system that is safe, equitable, accessible, sustainable, cost-effective and ensures our region is livable for people today and in the future.

Goals

- 1 - Significantly Reduce Severe and Fatal Injuries**
- 2 - Improve Transportation Mode Share Balance**
- 3 - Ensure Environmental Sustainability**
- 4 - Promote Economic Vitality**
- 5 - Ensure Equitable Access**
- 6 - Advance Resilient Networks**
- 7 - Maintain a State of Good Repair**